



LAWRENCEVILLE | ALPHARETTA-NORTH FULTON

FactBook | **2019**

Office of Institutional Research
and Effectiveness

2875 Old Milton Parkway
Alpharetta, GA 30009-2230
470-282-5400

5150 Sugarloaf Parkway
Lawrenceville, GA 30043-5702
770-962-7580

Executive Leadership

| | |
|-------------------|---------------------------------|
| Dr. Glen Cannon | President |
| Rebecca Alexander | VP of Academic Affairs |
| LaShanta' Cox | VP of Human Resources |
| Melvin Everson | VP of Economic Development |
| Galen Martin | VP of Technology and Operations |
| Sonya McDaniel | VP of Administration |
| Chuck McKinnon | VP of Communications |
| Dr. Julie Post | VP of Student Affairs |
| Stephanie Rooks | VP of Adult Education |

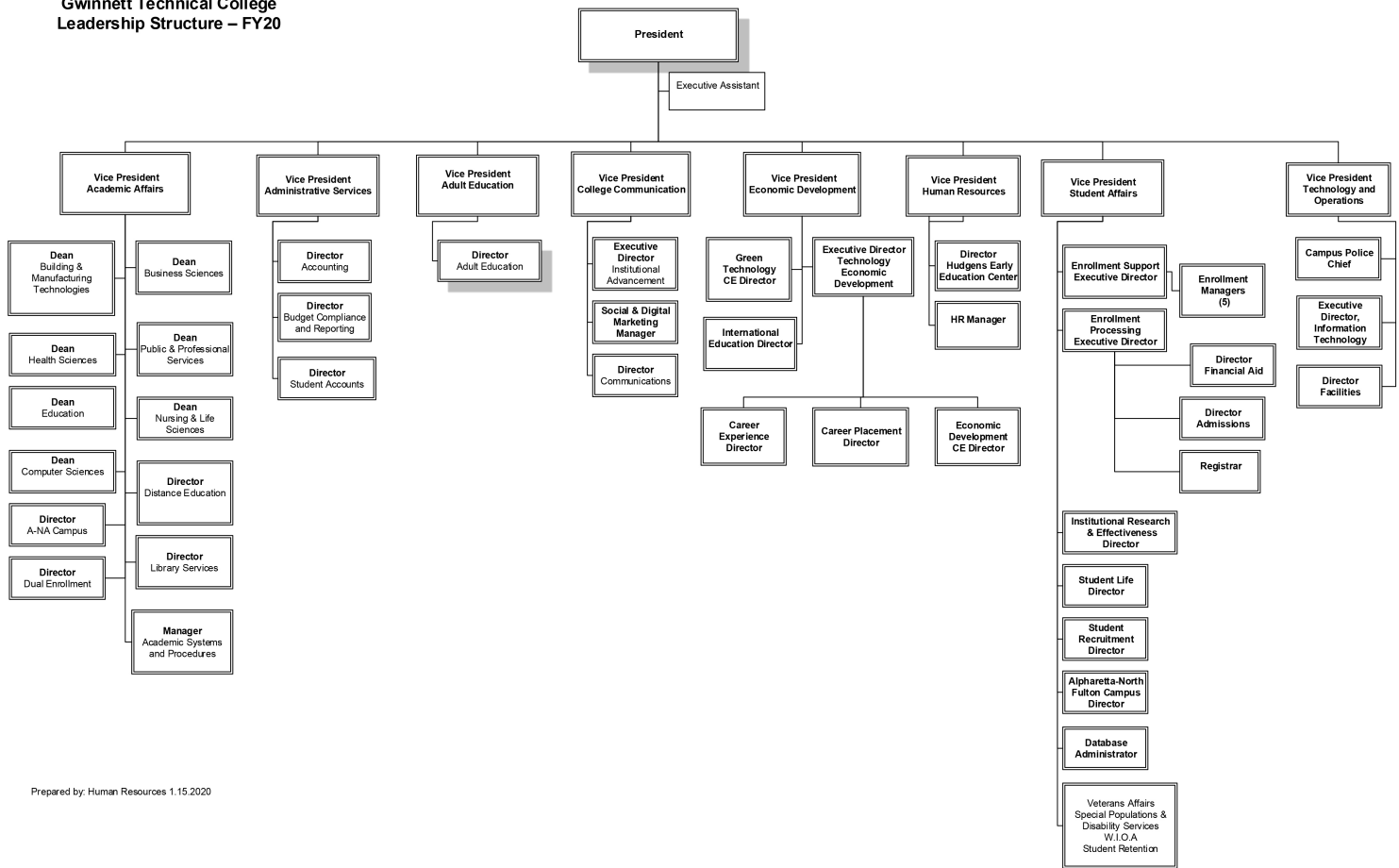
Local Board of Directors

| | |
|--------------------------------|----------------------------------------------------|
| Dean Collins | Axis Companies |
| Julie Haley, <i>Vice-Chair</i> | Edge Solutions, LLC |
| Keith Holmes | Cox Communications |
| Doug Jenkins, <i>Chair</i> | Georgia Power |
| Karyn Mullins | Healthcare Staffing Tech, a Jackson Healthcare Co. |
| Steve Nadeau | Gwinnett Medical Center |
| Alvin "Al" Nash | Development Authority of Fulton County |
| Lativia Ray-Alston | PricewaterhouseCoopers |
| Adam Walker | Summit Packaging Solutions |

- Gwinnett Technical College's service delivery area (SDA) includes Gwinnett County and North Fulton County. North Fulton was added to the service area in June 2010.
- Gwinnett Tech's service area is home to seven Fortune 500 companies: AGCO, NCR Corporation, Primerica, RockTenn, UPS, Newell Rubbermaid, and First Data Corporation.
- Gwinnett cities include Auburn, Berkley Lake, Braselton, Buford, Dacula, Duluth, Grayson, Lawrenceville, Lilburn, Loganville, Norcross, Peachtree Corners, Rest Haven, Snellville, Sugar Hill, and Suwanee.
- North Fulton cities include Sandy Springs, Alpharetta, Roswell, Mountain Park, Johns Creek, and Milton.
- Service area adjacent counties are as follows: Barrow, DeKalb, Forsyth, Fulton, Hall, Jackson, Rockdale, Walton, DeKalb, Gwinnett, Forsyth, Cherokee, and Cobb.



**Gwinnett Technical College
Leadership Structure – FY20**



Prepared by: Human Resources 1.15.2020

Vision

Teach every individual; serve every business.

Mission and Purpose

Advance the knowledge of individuals to enrich lives and develop workforce opportunities.

Gwinnett Tech, a unit of the Technical College System of Georgia, is a public two-year college that serves the communities of Gwinnett and North Fulton by offering campus and distance learning for associate degrees, diplomas, and certificates in credit programs; as well as for adult and continuing education training.

Values

What we have:

- Integrity: *We say what we mean, we treat people with respect, and we honor our promises.*
- Commitment: *We are devoted to our job, accountable to our students, our peers, and our leaders.*
- Excellence: *We strive to excel in all we do.*

What we provide:

- Customer Focus: *We believe that the students and businesses we serve are our customers and we strive to consistently meet or exceed their expectations.*
- Adaptability: *We embrace diversity and are resilient in our goal to serve an all-inclusive audience.*
- Leadership: *We recognize our duty to lead our students and serve our community.*
- Lifelong Learning: *We believe education to be the paramount foundation for continuing success.*
- Innovation: *We foster an environment that nurtures creativity and emerging technologies.*

A Great Education – Guaranteed

The Technical College System of Georgia has developed curriculum standards with the direct involvement of business and industry. These standards serve as the industry-validated specifications for each occupational program. These standards allow Georgia's 25 technical colleges, of which Gwinnett Technical College is one, to offer their business partners the following guarantee:

"If one of our graduates, who was educated under a standard program and his/her employer agree that the employee is deficient in one or more competencies as defined in the standards, the technical college will retrain that employee at no instructional cost to employee or employer."

This guarantee is in effect for a period of two years after graduation and applies to any graduate of our technical colleges who is employed in the field of his/her training.

2016 – 2020 Strategic Goals

Employee Enrichment: Create a culture of lifelong learning and Gwinnett Tech pride through professional development, team building, and employee recognition.

Facilities and Infrastructure Advancement: Create modern, inviting campuses with interactive spaces that support innovative life-long learning for the college community.

Operations and Technology Excellence: Reduce dependency on state funding by forging relationships and actively seeking contributions from alternate sources.

Perception Elevation: Meet budget needs through financial management, cost containment and new revenue streams.

Student Success Enhancement: Enhance safety, usability and accessibility of all college facilities utilizing green building practices, effective space planning, and innovative technologies.

Programs and Workforce Development: Proactively seek and improve the quality of service at the points of impact that drive a student's satisfaction with their overall experience at our college.

Accreditation

The **Southern Association of Colleges and Schools Commission on Colleges (SACSCOC)** accredits Gwinnett Technical College to award the associate degree. Contact the Commission on Colleges at 1866 Southern Lane, Decatur, Georgia 30033-4097 or call 404-67945010 for questions about the accreditation of Gwinnett Technical College.

This is the same accreditation shared by many other colleges and universities throughout the region. Gwinnett Tech's compliance with SACSCOC standards ensures that our programs and curriculum meet the quality standards that today's businesses demand.

In addition to institution-level accreditation, some industries require additional accreditation or certification by independent agencies that are program specific. Those programs and their additional accreditations include:

- Air Conditioning Technology
[Partnership for Air-Conditioning, Heating, Refrigeration Accreditation \(PAHRA\)](#)
- Automotive Service Technology/Automotive Technology
[National Automotive Technicians Education Foundation, Inc./Automotive Service Excellence \(ASE-NATEF\)](#)
- Cardiovascular Technology
[Commission on Accreditation of Allied Health Education Programs \(CAAHEP\)](#)
- Culinary Arts
[American Culinary Federation Education Foundation Accrediting Commission \(ACFEFAC\)](#)
- Dental Assisting
[Commission on Dental Accreditation \(CODA\)/American Dental Association \(ADA\)](#)
- Diagnostic Medical Sonography
[Commission on Accreditation of Allied Health Education Programs \(CAAHEP\)](#)
- Early Childhood and Education
[National Association for the Education of Young Children \(ACENAEYC\)](#)
- Echocardiography
[Commission on Accreditation of Allied Health Education Programs \(CAAHEP\)](#)
- Emergency Medical Technology/Paramedic Technology
[Commission on Accreditation of Allied Health Education Programs \(CAAHEP\)](#)
- Health Information Technology
[Commission on Accreditation for Health Informatics and Information Management \(CAHIIM\)](#)
- Medical Assisting
[Commission on Accreditation of Allied Health Education Programs \(CAAHEP\)](#)
- Paramedicine
[Commission on Accreditation of Allied Health Education Programs \(CAAHEP\)](#)
- Nursing
[Accreditation Commission for Education in Nursing, Inc. \(ACEN\)](#)
- Radiologic Technology
[Joint Review Committee on Education in Radiologic Technology \(JRCERT\)](#)
- Respiratory Care
[Commission on Accreditation for Respiratory Care \(CoARC\)](#)
- Surgical Technology
[Commission on Accreditation of Allied Health Education Programs \(CAAHEP\)](#)
- Veterinary Technology
[Committee on Veterinary Technician Education and Activities \(CVTEA\)](#)

Lawrenceville Campus

5150 Sugarloaf Parkway, Lawrenceville, GA 30043



- 100 . . . Main Building/Administrative Offices
- 200 . . . Health Sciences
- 300 . . . Automotive
- 400 . . . Annex
- 500 . . . Interior Design
- 600 . . . Horticulture
- 700 . . . Busbee Center
- 800 . . . Hudgens Early Learning Center
- 900 . . . Life Sciences

Alpharetta-North Fulton Campus

2875 Old Milton Parkway, Alpharetta, GA 30009

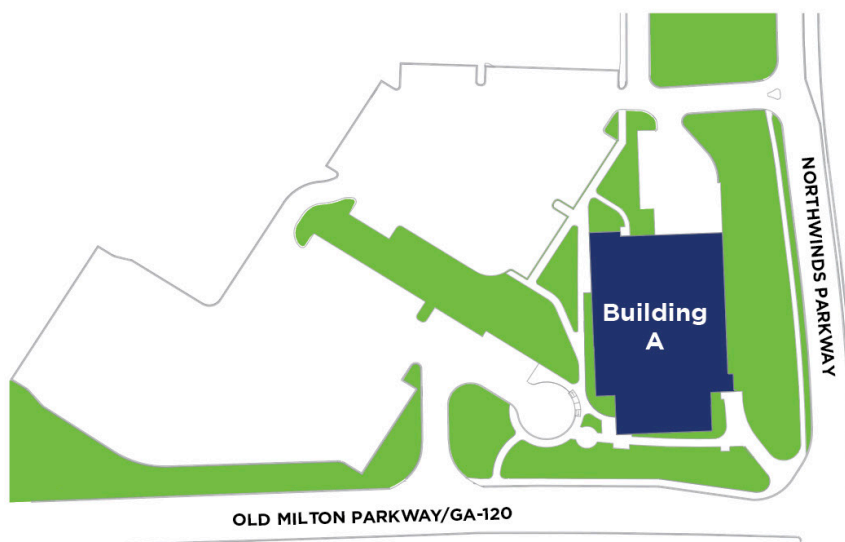


TABLE OF CONTENTS

| | |
|-------------------------------------------------------------------------|-----------|
| INSTITUTIONAL INFORMATION | 9 |
| History and Overview | 10 |
| Faculty and Staff Demographic Profile | 11 |
| Annual Expenditures by Group and Type | 11 |
| Facilities | 12 |
| Library Resources | 13 |
| Campus Security and Crime Report | 14 |
| FINANCIAL AID PROFILE | 16 |
| Financial Aid Recipients as Percent of Total Credit Enrollment | 17 |
| Financial Aid Recipients by Demographics (Percent Change, Year-to-Year) | 17 |
| Financial Aid Recipients by Demographics (Percentages) | 18 |
| Annual Aid Distribution by Type (Percentages) | 18 |
| OVERALL CREDIT STUDENT PROFILE | 19 |
| Demographic Profile (Unduplicated) | 20 |
| Annual Credit Enrollment Trends (Unduplicated) | 21 |
| Total Credit Hour Enrollment Trends (Unduplicated) | 21 |
| Full- and Part-Time Trends (Duplicated) | 22 |
| Credit Enrollment by Award Level (Duplicated) | 22 |
| Credit Enrollment by Division Trends (Duplicated) | 23 |
| Credit Enrollment by Average Credit Hour Load Trends (Duplicated) | 24 |
| Credit Enrollment by Course Type (Duplicated) | 24 |
| Credit Enrollment by County (Duplicated) | 25 |
| Credit Enrollment by Program (Duplicated) | 26 |
| BEGINNING STUDENT PROFILE | 30 |
| Demographic Profile (Unduplicated) | 31 |
| Annual Credit Enrollment (Unduplicated) | 32 |
| Credit Enrollment by Course Type (Duplicated) | 32 |
| Credit Enrollment by Division (Unduplicated) | 33 |
| TRANSFER STUDENT PROFILE | 34 |
| Demographic Profile (Unduplicated) | 35 |
| Annual Credit Enrollment (Unduplicated) | 36 |
| Credit Enrollment by Course Type (Duplicated) | 36 |
| Credit Enrollment by Division (Unduplicated) | 37 |
| DUAL ENROLLMENT STUDENT PROFILE | 38 |
| Demographic Profile (Unduplicated) | 39 |
| Annual Credit Enrollment (Unduplicated) | 39 |
| Credit Enrollment by Course Type (Duplicated) | 40 |
| Credit Enrollment by Division (Unduplicated) | 41 |
| ONLINE ONLY STUDENT PROFILE | 42 |
| Demographic Profile (Unduplicated) | 43 |
| Annual Credit Enrollment (Unduplicated) | 44 |
| Total Credit Hour Enrollment Trends (Unduplicated) | 44 |
| Credit Enrollment by Division (Unduplicated) | 45 |
| SPECIAL POPULATION STUDENT PROFILE | 46 |
| Non-Traditional | 47 |
| Disabled | 48 |
| Economically Disadvantaged | 49 |
| Limited English Proficient | 50 |
| Single Parent | 51 |
| Displaced Homemaker | 52 |

| | |
|-----------------------------------------------------------------------------------|-----------|
| LEARNING SUPPORT STUDENT PROFILE | 53 |
| Learning Support Enrollees – Demographic Profile (Unduplicated) | 54 |
| Learning Support Enrollees – Annual Enrollment Trends (Unduplicated) | 54 |
| GENERAL EDUCATION DATA | 55 |
| Student Enrollment by Courses (Duplicated) | 56 |
| Course Completion Rates (Duplicated) | 57 |
| RETENTION STATISTICS | 59 |
| Overall Fall-to-Fall Retention Rates (Unduplicated) | 60 |
| Retention Rates by Program | 61 |
| GRADUATION AND PLACEMENT STATISTICS | 64 |
| Annual Graduation Rates and Trends (Percent Change, Year-to-Year) | 65 |
| Annual Number of Awards Conferred and Trends (Percent Change, Year-to-Year) | 65 |
| Degree Graduates by Program Area | 66 |
| Annual Placement Rates and Trends (Percent Change, Year-to-Year) | 67 |
| Placement Rates by Program (Overall and In-Field) | 67 |
| Program Certification/Licensure Pass Rates | 71 |
| CONTINUING EDUCATION | 73 |
| Demographic Profile | 74 |
| Annual Program Offerings and Enrollment | 74 |
| Program Offerings and Enrollment by Term | 75 |
| Top 10 Programs by Enrollment | 75 |
| Top Industries Served Through Non-Credit Training | 75 |
| TCSG PERFORMANCE | 76 |
| Total Credit Enrollment, Credit Hours, and FTE | 77 |
| Retention Rates | 78 |
| Graduates and Awards Conferred | 79 |
| Graduation Rates | 80 |
| Placement Rates Placed-in-Field and Total | 81 |

Institutional Information

- History and Overview
- Faculty and Staff Demographic Profile
- Annual Expenditures by Group and Type
- Facilities
- Library Resources
- Campus Security and Crime Report

History and Overview

Gwinnett Technical College has a rich history of providing education and specialized training that leads to workforce development. Since opening its doors as the Gwinnett Area Technical School in 1984, the College has added numerous programs, made two name changes, greatly expanded its facilities and experienced record-setting enrollment growth. All are the result of its primary aim to be the recognized provider of relevant knowledge to students and businesses for life.

Since its inception, Gwinnett Tech's purpose has been to provide students with an education that leads directly to a rewarding career. Throughout the years, it has relied on business and industry to play an integral part in guiding curriculum development and ensuring that what is taught in the classroom will keep students on the cutting edge of workplace demands. In the 1980s, business and industry experienced a vast change in technology. To meet the demand for technological training, Gwinnett Tech expanded its offerings to include a wider variety of high-tech programs. In 1988, the institution's name was changed to Gwinnett Technical Institute, aligning Gwinnett Tech with the network of state technical institutes under the Technical College System of Georgia (TCSG).

The following year, TCSG approved Gwinnett Tech to grant the associate degree of applied technology (AAT) in six programming areas, which paved the way for Gwinnett Tech to pursue accreditation with the Southern Association of Colleges and Schools Commission on Colleges. Gwinnett Tech gained accreditation in record time for state technical institutes, making it one of the few technical schools with this accreditation. Gwinnett Tech reached another benchmark in its history on July 6, 2000, when it changed its name to Gwinnett Technical College to better reflect its position within the region's higher education market. The name change was made possible by Georgia's A+ Education Reform Act of 2000, which allowed technical institutes with proper accreditation to be designated as colleges.

Over the past three decades, Gwinnett Technical College has expanded its campus to include a variety of new facilities. Significant campus additions in Lawrenceville include the George Busbee International Center for Workforce Development, which opened in 2003, and the D. Scott Hudgens, Jr. Early Education Center, which opened in 2006. In the fall of 2011, the College opened its new Life Sciences Center, which serves 3,000 annually and enables the College to both expand enrollment and offer additional programs in healthcare and life sciences. In June 2010, Gwinnett Tech's service area was expanded to include North Fulton County. Today, the College continues to expand offerings for residents and businesses there. In March 2015, construction began to build the first facility on the new 25-acre campus. The first day of class in the first building on the new campus was Wednesday, January 6, 2016. The College works on an ongoing basis with North Fulton high schools to offer Dual Enrollment opportunities and continues to offer Continuing Education and Adult Education classes at various community and company locations around the North Fulton area.

Today, Gwinnett Tech offers nearly 150 associate (AAS) degrees, diplomas and certificates in 40 programs areas and hundreds of continuing education seminars and workshops to improve job skills and provide specialized training. Our education and training programs – on both campuses – can be designed to help business respond to industry market dynamics. Gwinnett Tech is already a critical resource for the local, national and global technology, healthcare and service-based companies. Continuing education and adult education opportunities further strengthen our response to individual growth and workforce development. Business and industry leaders want a skilled workforce to drive the economy of this state. Gwinnett Tech is now one of the state's largest technical colleges and last year served more than 18,000 students through the College's credit programs, continuing education workshops and courses, and the adult education program.

Institutional Information
Faculty and Staff Demographic Profile
AY2019

| | Faculty (Adult Education) | Faculty (Continuing Education) | Faculty (Credit) | Staff | Total |
|---------------------------------|---------------------------------|--------------------------------------|---------------------|------------|--------------|
| Ethnicity | | | | | |
| American Indian | 0 | 0 | 1 | 1 | 2 |
| Asian | 9 | 2 | 48 | 39 | 98 |
| Black | 64 | 5 | 198 | 257 | 524 |
| Hawaiian/Other Pacific Islander | 1 | 0 | 1 | 0 | 2 |
| Hispanic | 5 | 2 | 18 | 44 | 69 |
| Multi-racial | 1 | 1 | 7 | 15 | 24 |
| White | 41 | 21 | 307 | 302 | 671 |
| Gender | | | | | |
| Female | 101 | 26 | 328 | 457 | 912 |
| Male | 20 | 5 | 252 | 201 | 478 |
| Status | | | | | |
| Full-Time | 7 | 0 | 131 | 333 | 471 |
| Part-Time | 114 | 31 | 449 | 325 | 919 |
| Total | 121 | 31 | 580 | 658 | 1,390 |

*Data provided by Gwinnett Tech's Human Resources Office

Institutional Information
Annual Expenditures by Group and Type
AY2019

| | Instruction | Administration | General Business | Student Support | M & O |
|--------------------|-------------------------|------------------------|------------------------|------------------------|------------------------|
| Operating | \$ 4,152,312.15 | \$ 3,061,773.14 | \$ 2,461,974.74 | \$ 711,830.91 | \$ 2,578,301.14 |
| Benefits | \$ 5,686,673.15 | \$ 1,959,142.06 | \$ 1,023,269.09 | \$ 2,235,318.06 | \$ 678,537.71 |
| Salaries | \$ 15,539,696.53 | \$ 4,047,559.09 | \$ 1,730,253.30 | \$ 4,534,850.48 | \$ 1,145,132.51 |
| Grand Total | \$ 25,378,681.83 | \$ 9,068,474.29 | \$ 5,215,497.13 | \$ 7,481,999.45 | \$ 4,401,971.36 |
| % of Totals | 49.2% | 17.6% | 10.1% | 14.5% | 8.5% |

*Data provided by Gwinnett Tech's Office of Administrative Services

Institutional Information

Campus Facilities

AY2019

| Campus/Building | Square Ft. | Yr. Built | Renovated | Max Occupants |
|---------------------------------------------------|------------|-----------|----------------|---------------|
| Lawrenceville Campus | | | | |
| Building 100 - Main Administration | 254,494 | 1984 | | 5,030 |
| Academic Affairs | | | May, 2011 | |
| Administrative Services Office | | | January, 2014 | |
| Adult Education/GED | | | March, 2011 | |
| Counseling Office | | | February, 2019 | |
| Bookstore | | | July, 2018 | |
| Early Childhood | | | March, 2003 | |
| Food Court | | | March, 2010 | |
| Human Resources Office | | | January, 2014 | |
| Learning Support Labs(812/813) | | | July, 2001 | |
| Library | | | March, 2010 | |
| Lobby @ 401 | | | October, 2019 | |
| Office: 519 | | | January, 2011 | |
| Offices: 922-924 | | | January, 2011 | |
| Offices: 932, 932A, 932B | | | January, 2011 | |
| Offices: 407A and 407B | | | August, 2010 | |
| One-Stop Area | | | February, 2014 | |
| Police Station | | | January, 2014 | |
| Recruitment | | | March, 2010 | |
| Student Center/Vending | | | March, 2010 | |
| Veteran Affairs/Special Pop./Disability Services | | | February, 2013 | |
| Welding Labs | | | February, 2018 | |
| Building 200 - Health Sciences | 61,294 | 1995 | | 1,286 |
| First Floor | 21,042 | | | 648 |
| Second Floor | 20,162 | | | 306 |
| Third Floor | 20,090 | | January, 2015 | 332 |
| Building 300 - Automotive | 41,332 | | December, 2019 | |
| Building 400 - Adult Ed-ESL Training Center | 5,598 | 1992 | March, 2000 | 160 |
| Building 500 - Interiors | 4,623 | 1986 | | |
| First Floor (Basement) | 881 | | | |
| Second Floor | 2,317 | | | |
| Third Floor | 1,425 | | July, 1994 | |
| Building 600 - Horticulture (includes Greenhouse) | 20,760 | 2002 | December, 2019 | 1,869 |
| Building 700 - Busbee Center | 78,920 | 2003 | 2018 | 2,022 |
| First Floor | 46,280 | | December, 2018 | 1,390 |
| Second Floor | 32,640 | | January, 2013 | 632 |
| Building 800 - Early Education Center | 26,591 | 2006 | July, 2006 | 249 |
| Building 900 - Nursing and Life Sciences | 80,211 | 2011 | | |
| Alpharetta - North Fulton Campus | | | | |
| Building A | 91,798 | 2015 | | 2,122 |

*Data provided by Gwinnett Tech's Facilities Department

Institutional Information

Library Resources

AY2019

Lawrenceville Campus

Alpharetta-North Fulton Campus

Space

- 9,300 square feet total
- Public/common area (7,500 square feet)
- Five conference rooms for college-related activities and studying
- 1 Computer Lab (800 square feet)
- Office and work room (1,000 square feet, 300 square feet for storage and materials processing)
- Open 58 hours per week during academic semesters
- 181 seats (includes high-top and lounge chairs, individual carrels and desks, and tables)

- 750 square feet total
- Conference room (100 square feet)
- Office and work room (200 square feet)
- 1 adjacent computer lab
- Open 50 hours per week during academic semesters
- 30 seats (combination of lounge chairs, tables, counters)

Technology

- 26 public/common area computer workstations with internet access
- 20 lab computers
- 13 laptops for faculty checkout
- Wireless internet and media viewing-enabled computers
- Printer, Projector, and Coin-Operated Photocopier

- 15 public/common area computers
- 30 computers in adjacent lab
- 6 laptops for student/staff checkout
- Wireless internet and media viewing-enabled computers
- Printer, Photocopier

Collection

Organized by Library of Congress Classification System

- Books: 15,419 Titles
- Media: 1,160 Titles
- Periodicals: 26 Titles

- Books: 1,466 Titles
- Media: 5 Titles
- Periodicals: 7 Titles

Cross-Campus Service & Resources

Services

- Gwinnett Technical College libraries are compliance with the American Disabilities Act (ADA)
- In-Person and remote research assistance and instruction services provided
- LibGuides, LibAnswers, LibChat, LibWizard Tutorials & Assessments
- Collection enhancement through Interlibrary Loan and TCSG service "Tech Share"
- Borrowing arrangements with TCSG Libraries, Georgia Gwinnett College, and Gwinnett County Public Library
- Professional, MLS-degree instructors and research specialists available during all open hours

Electronic Collections

- ~548,358 eBook Titles
- ~34,480 Films on Demand (streaming video titles)
- ~150 GALILEO subscription databases, 18 paid subscription databases

*Data provided by Gwinnett Tech's Library Department

Institutional Information

Campus Security and Crime Report

Policies concerning security and safety at Gwinnett Technical College can be found in the Course Catalog, under the “Student Information” section (<http://catalog.gwinnettech.edu/content.php?catoid=8&navoid=486>).

Gwinnett Technical College police are present during normal operating hours. Police officers are responsible for a full range of public safety services, including all crime reports, investigations, and traffic control/accident reports, enforcement of laws concerning use of alcoholic beverages, controlled substances and weapons on campus, and all other incidents requiring police assistance or emergency medical care.

Each year, Gwinnett Technical College publishes specific crime-related information in accordance with the guidelines of the Jeanne Clery Disclosure of Campus Security Policy and Campus Crime Statistics Act (formerly the Campus Security Act of 1990). This report is available in the office of the chief of security/campus police (Building 100, Room 808) as well as the College’s website (<http://www.gwinnettech.edu/campus/campus-police>).

Institutional Information

Gwinnett Technical College Crime Statistics (Lawrenceville Campus)

AY2016 - AY2018

| Category | <u>On-Campus Criminal Offenses</u> | | | <u>Non-Campus Buildings</u> | | | <u>Public Property</u> | | |
|-----------------------------------|------------------------------------|------|------|-----------------------------|------|------|------------------------|------|------|
| | 2016 | 2017 | 2018 | 2016 | 2017 | 2018 | 2016 | 2017 | 2018 |
| Murder/Non-negligent Manslaughter | 0 | 0 | 0 | 0 | 0 | 0 | 0 | 0 | 0 |
| Manslaughter by Negligence | 0 | 0 | 0 | 0 | 0 | 0 | 0 | 0 | 0 |
| Sex Offenses | | | | | | | | | |
| Rape | 0 | 0 | 0 | 0 | 0 | 0 | 0 | 0 | 0 |
| Fondling | 0 | 1 | 1 | 0 | 0 | 0 | 0 | 0 | 0 |
| Incest | 0 | 0 | 0 | 0 | 0 | 0 | 0 | 0 | 0 |
| Statutory Rape | 0 | 0 | 0 | 0 | 0 | 0 | 0 | 0 | 0 |
| Robbery | 0 | 0 | 0 | 0 | 0 | 0 | 0 | 0 | 0 |
| Aggravated Assault | 0 | 0 | 0 | 0 | 0 | 0 | 0 | 0 | 0 |
| Burglary | 0 | 0 | 0 | 0 | 0 | 0 | 0 | 0 | 0 |
| Motor Vehicle Theft | 0 | 0 | 0 | 0 | 0 | 0 | 0 | 0 | 0 |
| Arson | 0 | 0 | 0 | 0 | 0 | 0 | 0 | 0 | 0 |
| ARRESTS | | | | | | | | | |
| Liquor Law Violations | 0 | 0 | 0 | 0 | 0 | 0 | 0 | 0 | 0 |
| Drug Abuse Violations | 1 | 0 | 1 | 0 | 0 | 0 | 0 | 0 | 0 |
| Weapon Possessions | 0 | 0 | 0 | 0 | 0 | 0 | 0 | 0 | 0 |
| DISCIPLINARY ACTIONS | | | | | | | | | |
| Liquor Law Violations | 0 | 0 | 0 | 0 | 0 | 0 | 0 | 0 | 0 |
| Drug Abuse Violations | 0 | 0 | 0 | 0 | 0 | 0 | 0 | 0 | 0 |
| Weapon Possessions | 0 | 0 | 0 | 0 | 0 | 0 | 0 | 0 | 0 |

Institutional Information
Gwinnett Technical College Crime Statistics (Lawrenceville Campus)
AY2016 - AY2018

| Category | <u>On-Campus Criminal Offenses</u> | | | <u>Non-Campus Buildings</u> | | | <u>Public Property</u> | | |
|---------------------|------------------------------------|------|------|-----------------------------|------|------|------------------------|------|------|
| | 2016 | 2017 | 2018 | 2016 | 2017 | 2018 | 2016 | 2017 | 2018 |
| Domestic Violence | 0 | 0 | 0 | 0 | 0 | 0 | 0 | 0 | 0 |
| Dating Violence | 0 | 0 | 0 | 0 | 0 | 0 | 0 | 0 | 0 |
| Stalking | 0 | 0 | 0 | 0 | 0 | 0 | 0 | 0 | 0 |
| Unfounded Incidents | 0 | 0 | 0 | 0 | 0 | 0 | 0 | 0 | 0 |

* Data retrieved from the 2018 Gwinnett Technical College's 2018 Safety and Security Report

For offenses of domestic violence, dating violence, and stalking, such statistics shall be compiled in accordance with the definitions used in section 40002(9) of the Violence Against Women Act of 1994 (42 U.S.C. 13925(a)). Such statistics shall not identify victims of crimes or persons accused of crimes.

2018 Hate Crimes – Lawrenceville and Alpharetta-North Fulton Campuses

No reportable occurrences of hate crimes, on either campus or public property, for the criminal offenses of: murder, manslaughter by negligence, rape, fondling, incest, statutory rape, robbery, aggravated assault, burglary, motor vehicle theft, arson, simple assault, larceny-theft, intimidation and destruction/damage/vandalism of property, which include all categories of bias, such as race, religion, sexual orientation, gender, gender identity, disability, ethnicity, and national origin.

Financial Aid Profile

Financial Aid Recipients as Percent of
Total Credit Enrollment

Financial Aid Recipients by Demographics
(Percent Change, Year-to-Year)

Financial Aid Recipients by Demographics
(Percentages)

Annual Aid Distribution by Type (Percentages)

Financial Aid
Financial Aid Recipients as Percent of Total Credit Enrollment
AY2017 - AY2019

| | AY2017 | AY2018 | AY2019 |
|----------------------------------------|--------------|--------------|--------------|
| Total Aid Recipients (Unduplicated) | 7,628 | 9,773 | 8,482 |
| Total Credit Enrollment (Unduplicated) | 11,147 | 12,102 | 12,468 |
| % of Credit Enrolled Recipients | 68.4% | 80.8% | 68.0% |

*Data provided by Gwinnett Tech's Office of Financial Aid

Financial Aid
Demographics (Percent Change, Year-to-Year)
AY2017 - AY2019

| | AY2017 | AY2018 | % Change | AY2019 | % Change |
|--------------------------------------------|--------------|--------------|--------------|--------------|-------------|
| Gender | | | | | |
| Female | 4,877 | 5,446 | 11.7% | 5,386 | -1.1% |
| Male | 2,751 | 2,982 | 8.4% | 3,096 | 3.8% |
| Race/Ethnicity | | | | | |
| American Indian/Alaskan Native | 14 | 17 | 21.4% | 21 | 23.5% |
| Asian | 527 | 663 | 25.8% | 682 | 2.9% |
| Black or African American | 2,993 | 3,334 | 11.4% | 3,468 | 4.0% |
| Hispanic/Latino | 1,057 | 1,281 | 21.2% | 1,373 | 7.2% |
| Nat. Hawaiian/Other Pacific Islander | 9 | 19 | 111.1% | 19 | 0.0% |
| Two or more races | 292 | 332 | 13.7% | 349 | 5.1% |
| Unknown | 509 | 477 | -6.3% | 325 | -31.9% |
| White | 2,234 | 2,306 | 3.2% | 2,245 | -2.6% |
| Age Group | | | | | |
| Under 21 years | 1,295 | 2,538 | 96.0% | 3,027 | 19.3% |
| 21-25 years | 2,423 | 2,257 | -6.9% | 1,971 | -12.7% |
| 26-30 years | 1,479 | 1,395 | -5.7% | 1,319 | -5.4% |
| 31-35 years | 791 | 741 | -6.3% | 773 | 4.3% |
| 36-40 years | 599 | 587 | -2.0% | 549 | -6.5% |
| Over 40 years | 1,041 | 910 | -12.6% | 843 | -7.4% |
| Total Aid Recipients (Unduplicated) | 7,628 | 8,428 | 10.5% | 8,482 | 0.6% |

*Data provided by Gwinnett Tech's Office of Financial Aid

**Financial Aid
Demographics (Percentages)
AY2017 - AY2019**

| | AY2017 | AY2018 | AY2019 |
|--------------------------------------------|--------------|--------------|--------------|
| Gender | | | |
| Female | 63.9% | 64.6% | 63.5% |
| Male | 36.1% | 35.4% | 36.5% |
| Race/Ethnicity | | | |
| American Indian/Alaskan Native | 0.2% | 0.2% | 0.2% |
| Asian | 6.9% | 7.9% | 8.0% |
| Black or African American | 39.2% | 39.6% | 40.9% |
| Hispanic/Latino | 13.9% | 15.2% | 16.2% |
| Nat. Hawaiian/Other Pacific Islander | 0.1% | 0.2% | 0.2% |
| Two or more races | 3.8% | 3.9% | 4.1% |
| Unknown | 6.7% | 5.7% | 3.8% |
| White | 29.3% | 27.4% | 26.5% |
| Age Group | | | |
| Under 21 years | 17.0% | 30.1% | 35.7% |
| 21-25 years | 31.8% | 26.8% | 23.2% |
| 26-30 years | 19.4% | 16.6% | 15.6% |
| 31-35 years | 10.4% | 8.8% | 9.1% |
| 36-40 years | 7.9% | 7.0% | 6.5% |
| Over 40 years | 13.6% | 10.8% | 9.9% |
| Total Aid Recipients (Unduplicated) | 7,628 | 8,428 | 8,482 |

*Data provided by Gwinnett Tech's Office of Financial Aid

**Financial Aid
Annual Aid Distribution by Type (Percentages)
AY2017 - AY2019**

| Aid Type | AY2017 | AY2018 | AY2019 |
|--------------------|------------------------|------------------------|------------------------|
| Federal Grant | 37.2% | 38.0% | 40.5% |
| Federal Loan | 45.5% | 44.8% | 44.2% |
| Federal Work Study | 0.5% | 0.5% | 0.6% |
| Other Scholarship | 0.1% | 0.0% | 0.0% |
| State Grant | 15.6% | 15.8% | 13.5% |
| State Loan | 0.1% | 0.1% | 0.1% |
| State Scholarship | 0.9% | 0.8% | 1.1% |
| Grand Total | \$33,105,789.28 | \$36,316,338.41 | \$36,266,869.50 |

*Data provided by Gwinnett Tech's Office of Financial Aid

Overall Credit Student Profile

- Demographic Profile (Unduplicated)
- Annual Credit Enrollment Trends (Unduplicated)
- Total Credit Hour Enrollment Trends (Unduplicated)
- Full- and Part-time Trends (Duplicated)
- By Award Level (Duplicated)
- By Division Trends (Duplicated)
- By Average Credit Hour Load
- By Campus and Course Type (Duplicated)
- By County (10 or More Residents) (Duplicated)
- By Program/Campus (Duplicated)

**Credit Enrollment
Demographic Profile (Unduplicated)
AY2019**

| | ANF | Percent | LAW | Percent | GTC | Percent |
|----------------------------------------|--------------|----------------|---------------|----------------|---------------|----------------|
| Ethnicity | | | | | | |
| American Indian/Alaskan Native | 0 | 0.0% | 26 | 0.2% | 26 | 0.2% |
| Asian | 120 | 9.1% | 957 | 8.5% | 1,069 | 8.6% |
| Black or African American | 332 | 25.3% | 4,203 | 37.4% | 4,510 | 36.2% |
| Hispanic/Latino | 156 | 11.9% | 2,058 | 18.3% | 2,206 | 17.7% |
| Native Hawaiian/Other Pacific Islander | 3 | 0.2% | 26 | 0.2% | 29 | 0.2% |
| Two or more races | 57 | 4.3% | 405 | 3.6% | 456 | 3.7% |
| Unknown | 57 | 4.3% | 436 | 3.9% | 490 | 3.9% |
| White | 589 | 44.8% | 3,126 | 27.8% | 3,682 | 29.5% |
| Age Group | | | | | | |
| Under 21 years | 699 | 53.2% | 2,949 | 26.2% | 3,609 | 28.9% |
| 21-25 years | 278 | 21.2% | 3,271 | 29.1% | 3,532 | 28.3% |
| 26-30 years | 122 | 9.3% | 1,817 | 16.2% | 1,928 | 15.5% |
| 31-35 years | 63 | 4.8% | 1,068 | 9.5% | 1,128 | 9.0% |
| 36-40 years | 53 | 4.0% | 783 | 7.0% | 832 | 6.7% |
| Over 40 years | 99 | 7.5% | 1,349 | 12.0% | 1,439 | 11.5% |
| Gender | | | | | | |
| | | | | 0.0% | | 0.0% |
| Female | 675 | 51.4% | 6,799 | 60.5% | 7,422 | 59.5% |
| Male | 639 | 48.6% | 4,438 | 39.5% | 5,046 | 40.5% |
| Educational Attainment | | | | | | |
| Less than 12th | 566 | 4.5% | 1,714 | 13.7% | 2,246 | 18.0% |
| GED | 26 | 0.2% | 400 | 3.2% | 423 | 3.4% |
| High School Diploma | 324 | 2.6% | 4,142 | 33.2% | 4,444 | 35.6% |
| 1-3 Postsecondary | 325 | 2.6% | 4,223 | 33.9% | 4,529 | 36.3% |
| Bachelor's Degree | 59 | 0.5% | 658 | 5.3% | 712 | 5.7% |
| Greater than Bachelor's Degree | 14 | 0.1% | 100 | 0.8% | 114 | 0.9% |
| Total | 1,314 | 10.5% | 11,237 | 90.1% | 12,468 | 100.0% |

Source: KMS #TEC0123, #TEC0131

Credit Enrollment
Annual Credit Enrollment Trends (Unduplicated)
AY2017 - AY2019

| | ANF | LAW | GTC |
|---------------|--------------|---------------|---------------|
| AY2019 | 1,314 | 11,237 | 12,468 |
| Fall 2018 | 937 | 8,193 | 9,130 |
| Spring 2019 | 906 | 7,981 | 8,887 |
| Summer 2019 | 365 | 3,617 | 3,982 |
| AY2018 | 1,044 | 11,058 | 12,102 |
| Fall 2017 | 744 | 7,583 | 8,327 |
| Spring 2018 | 722 | 8,052 | 8,774 |
| Summer 2018 | 329 | 3,699 | 4,028 |
| AY2017 | 844 | 10,303 | 11,147 |
| Fall 2016 | 477 | 7,002 | 7,479 |
| Spring 2017 | 613 | 7,533 | 8,146 |
| Summer 2017 | 276 | 3,541 | 3,817 |

Source: KMS #TEC0131

Note: This report is run based on home campus. A student is counted as only having one home campus per term, based on his or her primary major (Major 1). Duplication will occur when adding counts across all three terms in an academic year.

Credit Enrollment
Total Credit Hour Enrollment Trends (Unduplicated)
AY2017 - AY2019

| | ANF | LAW | GTC |
|---------------|---------------|----------------|----------------|
| AY2019 | 15,556 | 153,389 | 168,945 |
| Fall 2018 | 6,808 | 66,620 | 73,428 |
| Spring 2019 | 6,750 | 64,887 | 71,637 |
| Summer 2019 | 1,998 | 21,882 | 23,880 |
| AY2018 | 12,519 | 148,501 | 161,020 |
| Fall 2017 | 5,455 | 61,745 | 67,200 |
| Spring 2018 | 5,264 | 64,671 | 69,935 |
| Summer 2018 | 1,800 | 22,085 | 23,885 |
| AY2017 | 9,526 | 139,369 | 148,895 |
| Fall 2016 | 3,720 | 56,945 | 60,665 |
| Spring 2017 | 4,356 | 61,305 | 65,661 |
| Summer 2017 | 1,450 | 21,119 | 22,569 |

Source: KMS #TEC0131

Note: This report is run based on home campus. A student is counted as only having one home campus per term, based on his or her primary major (Major 1). Duplication will occur when adding counts across all three terms in an academic year.

**Credit Enrollment
Full- and Part-time Trends (Duplicated)
AY2017 - AY2019**

| | | 2017 | 2018 | | 2019 | |
|------------|-----------|----------|----------|----------|----------|----------|
| | | Enrolled | Enrolled | % Change | Enrolled | % Change |
| ANF | Full-time | 212 | 236 | 11.3% | 282 | 19.5% |
| | Part-time | 754 | 976 | 29.4% | 1,164 | 19.3% |
| LAW | Full-time | 2,582 | 2,672 | 3.5% | 2,833 | 6.0% |
| | Part-time | 9,337 | 10,016 | 7.3% | 10,139 | 1.2% |
| GTC | Full-time | 2,787 | 2,903 | 4.2% | 3,108 | 7.1% |
| | Part-time | 10,048 | 10,943 | 8.9% | 11,240 | 2.7% |

Source: KMS #TEC0131

Note: Duplication is due to students registering for different credit hour loads each semester.

**Credit Enrollment
By Award Level (Duplicated)
AY2017 - AY2019**

| | | 2017 | 2018 | % Change | 2019 | % Change |
|------------|--------------------|---------------|---------------|--------------|---------------|--------------|
| GTC | | 11,147 | 12,102 | 8.6% | 12,468 | 3.0% |
| | Degree | 4,539 | 5,758 | 26.9% | 8,219 | 42.7% |
| | Diploma | 2,020 | 2,307 | 14.2% | 2,283 | -1.0% |
| | TCC | 4,438 | 3,564 | -19.7% | 724 | -79.7% |
| | Non-degree Seeking | 806 | 1,256 | 55.8% | 1,843 | 46.7% |
| ANF | | 844 | 1,086 | 28.7% | 1,314 | 21.0% |
| | Degree | 383 | 553 | 44.4% | 578 | 4.5% |
| | Diploma | 135 | 166 | 23.0% | 220 | 32.5% |
| | TCC | 138 | 75 | -45.7% | 43 | -42.7% |
| | Non-degree Seeking | 236 | 375 | 58.9% | 542 | 44.5% |
| LAW | | 10,362 | 11,082 | 6.9% | 11,237 | 1.4% |
| | Degree | 4,168 | 5,228 | 25.4% | 7,667 | 46.7% |
| | Diploma | 1,886 | 2,141 | 13.5% | 2,066 | -3.5% |
| | TCC | 4,306 | 3,489 | -19.0% | 682 | -80.5% |
| | Non-degree Seeking | 577 | 892 | 54.6% | 1,319 | 47.9% |

Source: KMS #TEC0131

Note: Duplication is due to students with multiple majors or students changing majors during the academic year.

**Credit Enrollment By Division Trends
By Division Trends (Duplicated)
AY2017 - AY2019**

| | 2017 Count | 2018 | | 2019 | |
|---------------------------------------------------|---------------|---------------|--------------|---------------|--------------|
| | | Count | % Change | Count | % Change |
| GTC | 11,147 | 12,102 | 8.6% | 12,468 | 3.0% |
| Business Sciences | 2,226 | 2,226 | 0.0% | 1,968 | -11.6% |
| Computer Sciences | 1,793 | 1,980 | 10.4% | 2,101 | 6.1% |
| Engineering, Construction, Manufacturing & Design | 957 | 1,077 | 12.5% | 1,131 | 5.0% |
| Health Sciences | 3,750 | 3,077 | -17.9% | 701 | -77.2% |
| Interdisciplinary Studies | N/O | 935 | N/A | 3,422 | 266.0% |
| Miscellaneous (DV00, SP00, IA00, TR00) | 806 | 1,256 | 55.8% | 1,843 | 46.7% |
| Nursing and Life Sciences | 873 | 846 | -3.1% | 614 | -27.4% |
| Public & Professional Services | 1,324 | 1,436 | 8.5% | 1,358 | -5.4% |
| ANF | 844 | 1,086 | 28.7% | 1,314 | 21.0% |
| Business Sciences | 212 | 292 | 37.7% | 276 | -5.5% |
| Computer Sciences | 295 | 307 | 4.1% | 381 | 24.1% |
| Engineering, Construction, Manufacturing & Design | 5 | 8 | 60.0% | 7 | -12.5% |
| Health Sciences | 22 | 45 | 104.5% | 23 | -48.9% |
| Interdisciplinary Studies | N/O | 21 | N/A | 42 | 100.0% |
| Miscellaneous (DV00, SP00, IA00, TR00) | 236 | 375 | 58.9% | 542 | 44.5% |
| Nursing and Life Sciences | 21 | 28 | 33.3% | 20 | -28.6% |
| Public & Professional Services | 101 | 86 | -14.9% | 89 | 3.5% |
| LAW | 10,362 | 11,082 | 6.9% | 11,237 | 1.4% |
| Business Sciences | 2,021 | 1,939 | -4.1% | 1,701 | -12.3% |
| Computer Sciences | 1,503 | 1,682 | 11.9% | 1,729 | 2.8% |
| Engineering, Construction, Manufacturing & Design | 952 | 1,071 | 12.5% | 1,124 | 4.9% |
| Health Sciences | 3,731 | 3,034 | -18.7% | 679 | -77.6% |
| Interdisciplinary Studies | N/O | 915 | N/A | 3,382 | 269.6% |
| Miscellaneous (DV00, SP00, IA00, TR00) | 577 | 892 | 54.6% | 1,319 | 47.9% |
| Nursing and Life Sciences | 852 | 818 | -4.0% | 595 | -27.3% |
| Public & Professional Services | 1,225 | 1,355 | 10.6% | 1,271 | -6.2% |

Source: KMS #TEC0131

Note: Duplication is due to changes in major during the academic year.

N/O: Not Offered

**Credit Enrollment
By Average Credit Hour Load
AY2017 - AY2019**

| | GTC | | | ANF | | | LAW | | |
|--------|------|------|------|------|------|------|------|------|------|
| | 2017 | 2018 | 2019 | 2017 | 2018 | 2019 | 2017 | 2018 | 2019 |
| Fall | 8.1 | 8.1 | 8.0 | 7.8 | 7.3 | 7.3 | 8.1 | 8.1 | 8.1 |
| Spring | 8.1 | 8.0 | 8.1 | 7.1 | 7.3 | 7.5 | 8.1 | 8.0 | 8.1 |
| Summer | 5.9 | 5.9 | 6.0 | 5.3 | 5.5 | 5.5 | 6.0 | 6.0 | 6.0 |

Source: KMS #TEC0126

**Credit Enrollment
By Campus and Course Type (Duplicated)
AY2019**

| Campus/Course Type | 201912 | 201914 | 201916 | AY2019 |
|--------------------|---------------|---------------|--------------|---------------|
| ANF | | | | |
| Hybrid (< 50%) | 302 | 471 | 79 | 852 |
| Hybrid (>= 50%) | 641 | 620 | 233 | 1,494 |
| Web-enhanced | 1,337 | 1,288 | 164 | 2,789 |
| GVTC | | | | |
| Online | 4,387 | 6,095 | 2,584 | 13,066 |
| LAW | | | | |
| Hybrid (< 50%) | 4,845 | 3,208 | 1,027 | 9,080 |
| Hybrid (>= 50%) | 3,335 | 3,244 | 1,767 | 8,346 |
| Lecture | 14 | 0 | 0 | 14 |
| Online | 8 | 0 | 0 | 8 |
| Web-enhanced | 10,560 | 9,207 | 2,205 | 21,972 |
| Grand Total | 25,429 | 24,133 | 8,059 | 57,621 |

Source: Crystal Report - College-Wide Student Rosters, Academic Affairs Course Schedule

Note: Duplication is due to students registering for multiple courses.

**Credit Enrollment
By County* (Duplicated)
AY2019**

| County | ANF | LAW | GTC |
|-----------------------------|--------------|---------------|---------------|
| Gwinnett | 170 | 8,123 | 8,267 |
| Fulton | 894 | 677 | 1,534 |
| DeKalb | 38 | 789 | 818 |
| Barrow | 2 | 364 | 366 |
| Forsyth | 114 | 181 | 290 |
| Hall | 5 | 170 | 175 |
| Walton | 0 | 157 | 157 |
| Cobb | 33 | 106 | 138 |
| Jackson | 1 | 119 | 120 |
| Rockdale | 2 | 96 | 98 |
| Newton | 1 | 93 | 94 |
| Clayton | 5 | 72 | 76 |
| Henry | 4 | 56 | 60 |
| Cherokee | 26 | 31 | 56 |
| Clarke | 2 | 45 | 46 |
| Out-of-State | 3 | 34 | 37 |
| Dawson | 9 | 14 | 22 |
| Fayette | 1 | 16 | 17 |
| Oconee | 0 | 14 | 14 |
| Douglas | 1 | 11 | 12 |
| Paulding | 2 | 9 | 11 |
| Total (Unduplicated) | 1,314 | 11,237 | 12,468 |

Source: KMS #TEC0172

*Any counties with enrollment counts that were less than ten were omitted. Students that reported different residences during the academic year will appear once for each county.

**Credit Enrollment
By Program/Campus (Unduplicated)
AY2017 - AY2019**

| Program/Campus | 2017 | 2018 | % Change | 2019 | % Change |
|-------------------------------------------|------------|------------|---------------|------------|---------------|
| Accounting | 330 | 341 | 3.3% | 360 | 5.6% |
| ANF | 43 | 54 | 25.6% | 49 | -9.3% |
| LAW | 289 | 288 | -0.3% | 312 | 8.3% |
| Air Conditioning Technology | 223 | 212 | -4.9% | 201 | -5.2% |
| LAW | 223 | 212 | -4.9% | 201 | -5.2% |
| Automotive Technology | 277 | 290 | 4.7% | 268 | -7.6% |
| ANF | 1 | 0 | -100.0% | 1 | N/A |
| LAW | 276 | 290 | 5.1% | 267 | -7.9% |
| Barbering | 22 | 22 | 0.0% | 26 | 18.2% |
| LAW | 22 | 22 | 0.0% | 26 | 18.2% |
| Biotechnology | 24 | 52 | 116.7% | 123 | 136.5% |
| ANF | 0 | 1 | N/A | 0 | -100.0% |
| LAW | 24 | 52 | 116.7% | 123 | 136.5% |
| Business and Office Technology | 334 | 286 | -14.4% | 270 | -5.6% |
| ANF | 24 | 24 | 0.0% | 31 | 29.2% |
| LAW | 310 | 262 | -15.5% | 239 | -8.8% |
| Business Management | 770 | 797 | 3.5% | 725 | -9.0% |
| ANF | 99 | 142 | 43.4% | 127 | -10.6% |
| LAW | 674 | 656 | -2.7% | 601 | -8.4% |
| Cardiovascular Technology | 35 | 35 | 0.0% | 35 | 0.0% |
| LAW | 35 | 35 | 0.0% | 35 | 0.0% |
| Carpentry | 16 | 22 | 37.5% | 27 | 22.7% |
| LAW | 16 | 22 | 37.5% | 27 | 22.7% |
| Certified Nursing Assistant | 0 | 0 | N/A | 11 | N/A |
| ANF | 0 | 0 | N/A | 2 | N/A |
| LAW | 0 | 0 | N/A | 9 | N/A |
| CISCO Network Specialist | 0 | 3 | N/A | 2 | -33.3% |
| ANF | 0 | 1 | N/A | 1 | 0.0% |
| LAW | 0 | 2 | N/A | 1 | -50.0% |
| Clinical Research | 1 | 8 | 700.0% | 10 | 25.0% |
| ANF | 0 | 0 | N/A | 1 | N/A |
| LAW | 1 | 8 | 700.0% | 9 | 12.5% |
| Commercial Construction Management | 93 | 107 | 15.1% | 123 | 15.0% |
| LAW | 93 | 107 | 15.1% | 123 | 15.0% |
| Commercial Photography | 139 | 183 | 31.7% | 71 | -61.2% |
| ANF | 0 | 1 | N/A | 0 | -100.0% |
| LAW | 139 | 183 | 31.7% | 71 | -61.2% |
| Computer Networking | 542 | 430 | -20.7% | 414 | -3.7% |
| ANF | 116 | 44 | -62.1% | 52 | 18.2% |
| LAW | 427 | 388 | -9.1% | 362 | -6.7% |

Source: KMS #TEC0131

Note: Duplication is due to changes in major during the academic year.

**Credit Enrollment
By Program/Campus (Unduplicated), Cont.
AY2017 - AY2019**

| Program Group/Campus | 2017 | 2018 | % Change | 2019 | % Change |
|-------------------------------------------|--------------|--------------|---------------|------------|----------------|
| Computer Programming | 551 | 624 | 13.2% | 618 | -1.0% |
| ANF | 85 | 104 | 22.4% | 128 | 23.1% |
| LAW | 467 | 521 | 11.6% | 492 | -5.6% |
| Cosmetology | 128 | 132 | 3.1% | 102 | -22.7% |
| LAW | 128 | 132 | 3.1% | 102 | -22.7% |
| Criminal Justice | 372 | 401 | 7.8% | 369 | -8.0% |
| ANF | 68 | 48 | -29.4% | 47 | -2.1% |
| LAW | 306 | 357 | 16.7% | 322 | -9.8% |
| Culinary Arts | 152 | 158 | 3.9% | 135 | -14.6% |
| ANF | 0 | 0 | N/A | 1 | N/A |
| LAW | 152 | 158 | 3.9% | 134 | -15.2% |
| Cybersecurity | 374 | 563 | 50.5% | 716 | 27.2% |
| ANF | 42 | 89 | 111.9% | 126 | 41.6% |
| LAW | 334 | 477 | 42.8% | 590 | 23.7% |
| Dental Assisting | 42 | 33 | -21.4% | 30 | -9.1% |
| LAW | 42 | 33 | -21.4% | 30 | -9.1% |
| Diagnostic Medical Sonography | 28 | 29 | 3.6% | 29 | 0.0% |
| LAW | 28 | 29 | 3.6% | 29 | 0.0% |
| Diesel Equipment Technology | 25 | 23 | -8.0% | 25 | 8.7% |
| LAW | 25 | 23 | -8.0% | 25 | 8.7% |
| Distribution-Materials Management | 7 | 6 | -14.3% | 13 | 116.7% |
| LAW | 7 | 6 | -14.3% | 13 | 116.7% |
| Drafting | 102 | 121 | 18.6% | 114 | -5.8% |
| ANF | 1 | 2 | 100.0% | 0 | -100.0% |
| LAW | 101 | 120 | 18.8% | 114 | -5.0% |
| Early Childhood Care and Education | 360 | 380 | 5.6% | 326 | -14.2% |
| ANF | 32 | 38 | 18.8% | 40 | 5.3% |
| LAW | 328 | 343 | 4.6% | 287 | -16.3% |
| Engineering Technology | 177 | 246 | 39.0% | 269 | 9.3% |
| ANF | 1 | 4 | 300.0% | 5 | 25.0% |
| LAW | 176 | 242 | 37.5% | 264 | 9.1% |
| Environmental Horticulture | 91 | 106 | 16.5% | 107 | 0.9% |
| ANF | 1 | 2 | 100.0% | 1 | -50.0% |
| LAW | 90 | 105 | 16.7% | 106 | 1.0% |
| Game Development | 229 | 238 | 3.9% | 239 | 0.4% |
| ANF | 39 | 47 | 20.5% | 49 | 4.3% |
| LAW | 190 | 191 | 0.5% | 191 | 0.0% |
| Health Care Science | 3,329 | 2,552 | -23.3% | 0 | -100.0% |
| ANF | 22 | 31 | 40.9% | 0 | -100.0% |
| LAW | 3,309 | 2,521 | -23.8% | 0 | -100.0% |

Source: KMS #TEC0131

Note: Duplication is due to changes in major during the academic year.

Credit Enrollment
By Program/Campus (Unduplicated), Cont.
AY2017 - AY2019

| Program Group/Campus | 2017 | 2018 | % Change | 2019 | % Change |
|-----------------------------------------------|------------|--------------|---------------|--------------|----------------|
| Health Information Technology | 33 | 28 | -15.2% | 27 | -3.6% |
| LAW | 33 | 28 | -15.2% | 27 | -3.6% |
| Hotel-Restaurant-Travel Management | 142 | 110 | -22.5% | 126 | 14.5% |
| ANF | 16 | 18 | 12.5% | 22 | 22.2% |
| LAW | 126 | 92 | -27.0% | 104 | 13.0% |
| Interdisciplinary Studies | N/O | 935 | N/A | 3,422 | 266.0% |
| ANF | N/O | 21 | N/A | 42 | 100.0% |
| LAW | N/O | 915 | N/A | 3,382 | 269.6% |
| Interiors | 105 | 120 | 14.3% | 127 | 5.8% |
| ANF | 0 | 0 | N/A | 1 | N/A |
| LAW | 105 | 120 | 14.3% | 126 | 5.0% |
| Marketing Management | 279 | 315 | 12.9% | 307 | -2.5% |
| ANF | 35 | 58 | 65.7% | 51 | -12.1% |
| LAW | 246 | 257 | 4.5% | 258 | 0.4% |
| Media Production | 110 | 78 | -29.1% | 0 | -100.0% |
| LAW | 110 | 78 | -29.1% | 0 | -100.0% |
| Medical Assisting | 707 | 677 | -4.2% | 413 | -39.0% |
| ANF | 19 | 20 | 5.3% | 11 | -45.0% |
| LAW | 688 | 657 | -4.5% | 403 | -38.7% |
| Mercedes Benz | N/O | 50 | N/A | 87 | 74.0% |
| LAW | N/O | 50 | N/A | 87 | 74.0% |
| Miscellaneous (SP00, IA00, DV00, TR00) | 806 | 1,256 | 55.8% | 1,843 | 46.7% |
| ANF | 236 | 375 | 58.9% | 542 | 44.5% |
| LAW | 577 | 892 | 54.6% | 1,319 | 47.9% |
| MOPAR CAP | 39 | 33 | -15.4% | 41 | 24.2% |
| LAW | 39 | 33 | -15.4% | 41 | 24.2% |
| Nursing | 147 | 142 | -3.4% | 164 | 15.5% |
| LAW | 147 | 142 | -3.4% | 164 | 15.5% |
| Paramedic Technology | 96 | 154 | 60.4% | 208 | 35.1% |
| ANF | 0 | 13 | N/A | 22 | 69.2% |
| LAW | 96 | 141 | 46.9% | 187 | 32.6% |
| Patient Care Assisting | 19 | 27 | 42.1% | 35 | 29.6% |
| ANF | 2 | 8 | 300.0% | 7 | -12.5% |
| LAW | 17 | 19 | 11.8% | 28 | 47.4% |
| Radiologic Technology | 68 | 48 | -29.4% | 52 | 8.3% |
| LAW | 68 | 48 | -29.4% | 52 | 8.3% |
| Residential Construction Management | 80 | 93 | 16.3% | 116 | 24.7% |
| ANF | 2 | 0 | -100.0% | 1 | N/A |
| LAW | 78 | 93 | 19.2% | 115 | 23.7% |

Source: KMS #TEC0131

Note: Duplication is due to changes in major during the academic year.

N/O: Not Offered

**Credit Enrollment
By Program/Campus (Unduplicated), Cont.
AY2017 - AY2019**

| Program Group/Campus | 2017 | 2018 | % Change | 2019 | % Change |
|----------------------------------------|---------------|---------------|---------------|---------------|--------------|
| Respiratory Therapy Technology | 41 | 33 | -19.5% | 33 | 0.0% |
| LAW | 41 | 33 | -19.5% | 33 | 0.0% |
| Surgical Technology | 71 | 112 | 57.7% | 111 | -0.9% |
| LAW | 71 | 112 | 57.7% | 111 | -0.9% |
| Veterinary Technology | 38 | 36 | -5.3% | 46 | 27.8% |
| LAW | 38 | 36 | -5.3% | 46 | 27.8% |
| Web Site Design and Development | 159 | 197 | 23.9% | 186 | -5.6% |
| ANF | 20 | 35 | 75.0% | 36 | 2.9% |
| LAW | 139 | 162 | 16.5% | 152 | -6.2% |
| Welding and Joining Technology | 181 | 184 | 1.7% | 184 | 0.0% |
| LAW | 181 | 184 | 1.7% | 184 | 0.0% |
| Grand Total | 11,147 | 12,102 | 8.6% | 12,468 | 3.0% |

Source: KMS #TEC0131

Note: Duplication is due to changes in major during the academic year.

Beginning Student Profile

- Demographic Profile (Unduplicated)
- Annual Credit Enrollment Trends (Unduplicated)
- By Division Trends (Duplicated)
- By Campus and Course Type (Duplicated)

**Beginning Student Enrollment
Demographic Profile (Unduplicated)
AY2019**

| | ANF | Percent | LAW | Percent | GTC | Percent |
|----------------------------------------|------------|----------------|--------------|----------------|--------------|----------------|
| Ethnicity | | | | | | |
| American Indian/Alaskan Native | 0 | 0.0% | 8 | 0.4% | 8 | 0.3% |
| Asian | 10 | 5.7% | 170 | 8.0% | 180 | 7.9% |
| Black or African American | 44 | 25.1% | 774 | 36.6% | 818 | 35.7% |
| Hispanic/Latino | 27 | 15.4% | 502 | 23.7% | 529 | 23.1% |
| Native Hawaiian/Other Pacific Islander | 0 | 0.0% | 4 | 0.2% | 4 | 0.2% |
| Two or more races | 4 | 2.3% | 69 | 3.3% | 73 | 3.2% |
| Unknown | 8 | 4.6% | 60 | 2.8% | 68 | 3.0% |
| White | 82 | 46.9% | 529 | 25.0% | 611 | 26.7% |
| Age Group | | | | | | |
| Under 21 years | 89 | 50.9% | 797 | 37.7% | 886 | 38.7% |
| 21-25 years | 46 | 26.3% | 664 | 31.4% | 710 | 31.0% |
| 26-30 years | 15 | 8.6% | 253 | 12.0% | 268 | 11.7% |
| 31-35 years | 7 | 4.0% | 166 | 7.8% | 173 | 7.6% |
| 36-40 years | 9 | 5.1% | 99 | 4.7% | 108 | 4.7% |
| Over 40 years | 9 | 5.1% | 137 | 6.5% | 146 | 6.4% |
| Gender | | | | | | |
| Female | 70 | 40.0% | 1,188 | 56.1% | 1,258 | 54.9% |
| Male | 105 | 60.0% | 928 | 43.9% | 1,033 | 45.1% |
| Educational Attainment | | | | | | |
| Less than 12th | 2 | 1.1% | 11 | 0.5% | 13 | 0.6% |
| GED | 13 | 7.4% | 170 | 8.0% | 183 | 8.0% |
| High School Diploma | 147 | 84.0% | 1,833 | 86.6% | 1,980 | 86.4% |
| 1-3 Postsecondary | 6 | 3.4% | 84 | 4.0% | 90 | 3.9% |
| Bachelor's Degree | 4 | 2.3% | 18 | 0.9% | 22 | 1.0% |
| Greater than Bachelor's Degree | 3 | 1.7% | 0 | 0.0% | 3 | 0.1% |
| Total | 175 | 7.6% | 2,116 | 92.4% | 2,291 | 100.0% |

Source: KMS #TEC0123, #TEC0131

**Beginning Student Enrollment
Annual Credit Enrollment Trends (Unduplicated)
AY2017 - AY2019**

| | ANF | LAW | GTC |
|---------------|------------|--------------|--------------|
| AY2019 | 175 | 2,116 | 2,291 |
| Fall 2018 | 95 | 1,384 | 1,479 |
| Spring 2019 | 65 | 550 | 615 |
| Summer 2019 | 15 | 185 | 200 |
| AY2018 | 148 | 1,652 | 1,800 |
| Fall 2017 | 97 | 988 | 1,085 |
| Spring 2018 | 39 | 519 | 558 |
| Summer 2018 | 12 | 145 | 157 |
| AY2017 | 176 | 1,876 | 2,052 |
| Fall 2016 | 108 | 1,187 | 1,295 |
| Spring 2017 | 58 | 541 | 599 |
| Summer 2017 | 10 | 148 | 158 |

Source: KMS #TEC0131

Note: This report is run based on home campus. A student is counted as only having one home campus per term, based on his or her primary major (Major 1). Duplication will occur when adding counts across all three terms in an academic year.

**Beginning Student Enrollment
By Campus and Course Type (Duplicated)
AY2019**

| Campus/Course Type | 201912 | 201914 | 201916 | AY2019 |
|--------------------|--------------|--------------|------------|--------------|
| ANF | | | | |
| Hybrid (< 50%) | 107 | 89 | 10 | 206 |
| Hybrid (>= 50%) | 125 | 39 | 16 | 180 |
| Web-enhanced | 295 | 106 | 14 | 415 |
| GVTC | | | | |
| Online | 564 | 314 | 109 | 987 |
| LAW | | | | |
| Hybrid (< 50%) | 944 | 490 | 92 | 1,526 |
| Hybrid (>= 50%) | 428 | 124 | 126 | 678 |
| Lecture | 2 | 0 | 0 | 2 |
| Web-enhanced | 2,088 | 593 | 84 | 2,765 |
| Grand Total | 4,553 | 1,755 | 451 | 6,759 |

Source: Crystal Report - College-Wide Student Rosters, Academic Affairs Course Schedule

Note: Duplication is due to students registering for multiple courses.

**Beginning Student Enrollment
By Division Trends (Duplicated)
AY2017 - AY2019**

| | 2017 | 2018 | | 2019 | |
|---------------------------------------------------|-------|-------|----------|-------|----------|
| | Count | Count | % Change | Count | % Change |
| GTC | 2,052 | 1,800 | -12.3% | 2,291 | 27.3% |
| Business Sciences | 367 | 325 | -11.4% | 286 | -12.0% |
| Computer Sciences | 378 | 304 | -19.6% | 359 | 18.1% |
| Engineering, Construction, Manufacturing & Design | 201 | 228 | 13.4% | 243 | 6.6% |
| Health Sciences | 642 | 436 | -32.1% | 103 | -76.4% |
| Interdisciplinary Studies | N/O | 160 | N/A | 885 | 453.1% |
| Miscellaneous (DV00, SP00, IA00, TR00) | 80 | 23 | -71.3% | 36 | 56.5% |
| Nursing and Life Sciences | 104 | 79 | -24.0% | 78 | -1.3% |
| Public & Professional Services | 280 | 245 | -12.5% | 302 | 23.3% |
| ANF | 176 | 148 | -15.9% | 175 | 18.2% |
| Business Sciences | 36 | 45 | 25.0% | 46 | 2.2% |
| Computer Sciences | 98 | 56 | -42.9% | 79 | 41.1% |
| Engineering, Construction, Manufacturing & Design | 1 | 1 | 0.0% | 1 | 0.0% |
| Health Sciences | 4 | 9 | 125.0% | 4 | -55.6% |
| Interdisciplinary Studies | N/O | 0 | N/A | 7 | N/A |
| Miscellaneous (DV00, SP00, IA00, TR00) | 16 | 14 | -12.5% | 15 | 7.1% |
| Nursing and Life Sciences | 6 | 9 | 50.0% | 3 | -66.7% |
| Public & Professional Services | 15 | 14 | -6.7% | 20 | 42.9% |
| LAW | 1,876 | 1,652 | -11.9% | 2,116 | 28.1% |
| Business Sciences | 331 | 280 | -15.4% | 240 | -14.3% |
| Computer Sciences | 280 | 248 | -11.4% | 280 | 12.9% |
| Engineering, Construction, Manufacturing & Design | 200 | 227 | 13.5% | 242 | 6.6% |
| Health Sciences | 638 | 427 | -33.1% | 99 | -76.8% |
| Interdisciplinary Studies | N/O | 160 | N/A | 878 | 448.8% |
| Miscellaneous (DV00, SP00, IA00, TR00) | 64 | 9 | -85.9% | 21 | 133.3% |
| Nursing and Life Sciences | 98 | 70 | -28.6% | 75 | 7.1% |
| Public & Professional Services | 265 | 231 | -12.8% | 282 | 22.1% |

Source: KMS #TEC0131

Note: Duplication is due to changes in major during the academic year.

N/O: Not Offered

Transfer Student Profile

- Demographic Profile (Unduplicated)
- Annual Credit Enrollment Trends (Unduplicated)
- By Division Trends (Duplicated)
- By Campus and Course Type (Duplicated)

**Transfer Student Enrollment
Demographic Profile (Unduplicated)
AY2019**

| | ANF | Percent | LAW | Percent | GTC | Percent |
|----------------------------------------|------------|----------------|--------------|----------------|--------------|----------------|
| Ethnicity | | | | | | |
| American Indian/Alaskan Native | 0 | 0.0% | 1 | 0.0% | 1 | 0.0% |
| Asian | 9 | 5.6% | 186 | 9.2% | 195 | 8.9% |
| Black or African American | 42 | 25.9% | 833 | 41.0% | 875 | 39.9% |
| Hispanic/Latino | 17 | 10.5% | 273 | 13.4% | 290 | 13.2% |
| Native Hawaiian/Other Pacific Islander | 0 | 0.0% | 5 | 0.2% | 5 | 0.2% |
| Two or more races | 5 | 3.1% | 71 | 3.5% | 76 | 3.5% |
| Unknown | 6 | 3.7% | 79 | 3.9% | 85 | 3.9% |
| White | 83 | 51.2% | 582 | 28.7% | 665 | 30.3% |
| Age Group | | | | | | |
| Under 21 years | 17 | 10.5% | 125 | 6.2% | 142 | 6.5% |
| 21-25 years | 71 | 43.8% | 694 | 34.2% | 765 | 34.9% |
| 26-30 years | 28 | 17.3% | 438 | 21.6% | 466 | 21.3% |
| 31-35 years | 13 | 8.0% | 267 | 13.2% | 280 | 12.8% |
| 36-40 years | 11 | 6.8% | 200 | 9.9% | 211 | 9.6% |
| Over 40 years | 22 | 13.6% | 306 | 15.1% | 328 | 15.0% |
| Gender | | | | | | |
| Female | 74 | 45.7% | 1,385 | 68.2% | 1,458 | 66.5% |
| Male | 88 | 54.3% | 645 | 31.8% | 734 | 33.5% |
| Educational Attainment | | | | | | |
| Less than 12th | 0 | 0.0% | 3 | 0.1% | 3 | 0.1% |
| GED | 0 | 0.0% | 3 | 0.1% | 3 | 0.1% |
| High School Diploma | 3 | 1.9% | 63 | 3.1% | 66 | 3.0% |
| 1-3 Postsecondary | 135 | 83.3% | 1,629 | 80.2% | 1,764 | 80.5% |
| Bachelor's Degree | 18 | 11.1% | 291 | 14.3% | 309 | 14.1% |
| Greater than Bachelor's Degree | 6 | 3.7% | 41 | 2.0% | 47 | 2.1% |
| Total | 162 | 7.4% | 2,030 | 92.6% | 2,192 | 100.0% |

Source: KMS #TEC0123, #TEC0131

**Transfer Student Enrollment
Annual Credit Enrollment Trends (Unduplicated)
AY2017 - AY2019**

| | ANF | LAW | GTC |
|---------------|------------|--------------|--------------|
| AY2019 | 162 | 2,030 | 2,192 |
| Fall 2018 | 71 | 1,164 | 1,235 |
| Spring 2019 | 65 | 600 | 665 |
| Summer 2019 | 26 | 269 | 295 |
| AY2018 | 173 | 1,877 | 2,050 |
| Fall 2017 | 78 | 970 | 1,048 |
| Spring 2018 | 70 | 674 | 744 |
| Summer 2018 | 25 | 234 | 259 |
| AY2017 | 259 | 2,518 | 2,777 |
| Fall 2016 | 133 | 1,452 | 1,585 |
| Spring 2017 | 91 | 740 | 831 |
| Summer 2017 | 35 | 326 | 361 |

Source: KMS #TEC0131

Note: This report is run based on home campus. A student is counted as only having one home campus per term, based on his or her primary major (Major 1). Duplication will occur when adding counts across all three terms in an academic year.

**Transfer Student Enrollment
By Campus and Course Type (Duplicated)
AY2019**

| Campus/Course Type | Fall 2019 | Spring 2020 | Summer 2020 | AY2019 |
|--------------------|--------------|--------------|-------------|--------------|
| ANF | | | | |
| Hybrid (< 50%) | 46 | 61 | 8 | 115 |
| Hybrid (>= 50%) | 78 | 46 | 21 | 145 |
| Web-enhanced | 246 | 94 | 22 | 362 |
| GVTC | | | | |
| Online | 623 | 495 | 205 | 1,323 |
| LAW | | | | |
| Hybrid (< 50%) | 550 | 261 | 81 | 892 |
| Hybrid (>= 50%) | 340 | 163 | 159 | 662 |
| Lecture | 2 | 0 | 0 | 2 |
| Web-enhanced | 1,732 | 635 | 127 | 2,494 |
| Grand Total | 3,617 | 1,755 | 623 | 5,995 |

Source: Crystal Report - College-Wide Student Rosters, Academic Affairs Course Schedule

Note: Duplication is due to students registering for multiple courses.

**Beginning Student Enrollment
By Division Trends (Duplicated)
AY2017 - AY2019**

| | | 2017 | 2018 | | 2019 | |
|------------|---------------------------------------------------|--------------|--------------|---------------|--------------|--------------|
| | | Count | Count | % Change | Count | % Change |
| GTC | | 2,777 | 2,050 | -26.2% | 2,192 | 6.9% |
| | Business Sciences | 483 | 331 | -31.5% | 225 | -32.0% |
| | Computer Sciences | 420 | 315 | -25.0% | 318 | 1.0% |
| | Engineering, Construction, Manufacturing & Design | 244 | 167 | -31.6% | 174 | 4.2% |
| | Health Sciences | 1,255 | 607 | -51.6% | 109 | -82.0% |
| | Interdisciplinary Studies | N/O | 342 | N/A | 1,105 | 223.1% |
| | Miscellaneous (DV00, SP00, IA00, TR00) | 48 | 38 | -20.8% | 31 | -18.4% |
| | Nursing and Life Sciences | 125 | 70 | -44.0% | 53 | -24.3% |
| | Public & Professional Services | 202 | 180 | -10.9% | 179 | -0.6% |
| ANF | | 259 | 173 | -33.2% | 162 | -6.4% |
| | Business Sciences | 68 | 63 | -7.4% | 45 | -28.6% |
| | Computer Sciences | 130 | 65 | -50.0% | 73 | 12.3% |
| | Engineering, Construction, Manufacturing & Design | 3 | 0 | -100.0% | 0 | N/A |
| | Health Sciences | 13 | 15 | 15.4% | 6 | -60.0% |
| | Interdisciplinary Studies | N/O | 3 | N/A | 9 | 200.0% |
| | Miscellaneous (DV00, SP00, IA00, TR00) | 19 | 13 | -31.6% | 11 | -15.4% |
| | Nursing and Life Sciences | 11 | 7 | -36.4% | 4 | -42.9% |
| | Public & Professional Services | 15 | 7 | -53.3% | 14 | 100.0% |
| LAW | | 2,518 | 1,877 | -25.5% | 2,030 | 8.2% |
| | Business Sciences | 415 | 268 | -35.4% | 180 | -32.8% |
| | Computer Sciences | 290 | 250 | -13.8% | 245 | -2.0% |
| | Engineering, Construction, Manufacturing & Design | 241 | 167 | -30.7% | 174 | 4.2% |
| | Health Sciences | 1,242 | 592 | -52.3% | 103 | -82.6% |
| | Interdisciplinary Studies | N/O | 339 | N/A | 1,096 | 223.3% |
| | Miscellaneous (DV00, SP00, IA00, TR00) | 29 | 25 | -13.8% | 20 | -20.0% |
| | Nursing and Life Sciences | 114 | 63 | -44.7% | 49 | -22.2% |
| | Public & Professional Services | 187 | 173 | -7.5% | 165 | -4.6% |

Source: KMS #TEC0131

Note: Duplication is due to changes in major during the academic year.

N/O: Not Offered

Dual Enrollment Student Profile

- Demographic Profile (Unduplicated)
- Annual Credit Enrollment Trends (Unduplicated)
- By Division Trends (Duplicated)
- By Campus and Course Type (Duplicated)

**Dual Enrollment Student Enrollment
Demographic Profile (Unduplicated)
AY2019**

| | ANF | Percent | LAW | Percent | GTC | Percent |
|----------------------------------------|------------|--------------|--------------|--------------|--------------|---------------|
| Ethnicity | | | | | | |
| American Indian/Alaskan Native | 0 | 0.0% | 6 | 0.4% | 6 | 0.3% |
| Asian | 83 | 14.9% | 175 | 10.8% | 254 | 11.8% |
| Black or African American | 112 | 20.1% | 580 | 35.8% | 684 | 31.9% |
| Hispanic/Latino | 55 | 9.9% | 336 | 20.7% | 389 | 18.1% |
| Native Hawaiian/Other Pacific Islander | 2 | 0.4% | 5 | 0.3% | 7 | 0.3% |
| Two or more races | 34 | 6.1% | 98 | 6.0% | 129 | 6.0% |
| Unknown | 19 | 3.4% | 32 | 2.0% | 49 | 2.3% |
| White | 253 | 45.3% | 390 | 24.0% | 628 | 29.3% |
| Age Group | | | | | | |
| Under 21 years | 557 | 99.8% | 1,621 | 99.9% | 2,144 | 99.9% |
| 21-25 years | 1 | 0.2% | 1 | 0.1% | 2 | 0.1% |
| Gender | | | | | | |
| Female | 339 | 60.8% | 1,071 | 66.0% | 1,387 | 64.6% |
| Male | 219 | 39.2% | 551 | 34.0% | 759 | 35.4% |
| Total | 558 | 26.0% | 1,622 | 75.6% | 2,146 | 100.0% |

Source: KMS #TEC0123, #TEC0131

Note: Duplication may occur due to changes to students' assigned home campus.

**Dual Enrollment Student Enrollment
Annual Credit Enrollment Trends (Unduplicated)
AY2017 - AY2019**

| | ANF | LAW | GTC |
|---------------|------------|--------------|--------------|
| AY2019 | 558 | 1,622 | 2,146 |
| Fall 2018 | 431 | 1,168 | 1,599 |
| Spring 2019 | 381 | 1,189 | 1,570 |
| Summer 2019 | 100 | 322 | 422 |
| AY2018 | 464 | 1,745 | 2,177 |
| Fall 2017 | 350 | 813 | 1,163 |
| Spring 2018 | 266 | 1,374 | 1,640 |
| Summer 2018 | 84 | 249 | 333 |
| AY2017 | 324 | 1,279 | 1,582 |
| Fall 2016 | 200 | 545 | 745 |
| Spring 2017 | 240 | 1,033 | 1,273 |
| Summer 2017 | 62 | 212 | 274 |

Source: KMS #TEC0131

Note: This report is run based on home campus. A student is counted as only having one home campus per term, based on his or her primary major (Major 1). Duplication will occur when adding counts across all three terms in an academic year.

**Dual Enrollment Student Enrollment
By Campus and Course Type (Duplicated)
AY2019**

| Campus/Course Type | Fall 2019 | Spring 2020 | Summer 2020 | AY2019 |
|--------------------|--------------|--------------|-------------|--------------|
| ANF | | | | |
| Hybrid (< 50%) | 29 | 116 | 13 | 158 |
| Hybrid (>= 50%) | 65 | 60 | 16 | 141 |
| Web-enhanced | 327 | 318 | 11 | 656 |
| GVTC | | | | |
| Online | 754 | 1,267 | 369 | 2,390 |
| LAW | | | | |
| Hybrid (< 50%) | 419 | 286 | 79 | 784 |
| Hybrid (>= 50%) | 322 | 230 | 108 | 660 |
| Web-enhanced | 1,529 | 1,007 | 67 | 2,603 |
| Grand Total | 3,445 | 3,284 | 663 | 7,392 |

Source: Crystal Report - College-Wide Student Rosters, Academic Affairs Course Schedule

Note: Duplication is due to students registering for multiple courses.

**Dual Enrollment Student Enrollment
By Division Trends (Duplicated)
AY2017 - AY2019**

| | 2017 Count | 2018 Count % Change | 2019 Count % Change |
|---------------------------------------------------|---------------|---------------------------|---------------------------|
| GTC | 1,582 | 2,177 37.6% | 2,146 -1.4% |
| Business Sciences | 275 | 297 8.0% | 188 -36.7% |
| Computer Sciences | 173 | 226 30.6% | 164 -27.4% |
| Engineering, Construction, Manufacturing & Design | 56 | 83 48.2% | 40 -51.8% |
| Health Sciences | 141 | 85 -39.7% | 7 -91.8% |
| Interdisciplinary Studies | N/O | 86 N/A | 136 58.1% |
| Miscellaneous (DV00, SP00, IA00, TR00) | 565 | 1,061 87.8% | 1,633 53.9% |
| Nursing and Life Sciences | 340 | 353 3.8% | 145 -58.9% |
| Public & Professional Services | 217 | 259 19.4% | 81 -68.7% |
| ANF | 324 | 464 43.2% | 558 20.3% |
| Business Sciences | 77 | 93 20.8% | 53 -43.0% |
| Computer Sciences | 35 | 53 51.4% | 34 -35.8% |
| Engineering, Construction, Manufacturing & Design | 0 | 2 N/A | 1 -50.0% |
| Health Sciences | 3 | 7 133.3% | -100.0% |
| Interdisciplinary Studies | N/O | 7 N/A | 14 100.0% |
| Miscellaneous (DV00, SP00, IA00, TR00) | 176 | 333 89.2% | 494 48.3% |
| Nursing and Life Sciences | 4 | 4 0.0% | 4 0.0% |
| Public & Professional Services | 62 | 34 -45.2% | 7 -79.4% |
| LAW | 1,279 | 1,745 36.4% | 1,622 -7.0% |
| Business Sciences | 204 | 206 1.0% | 136 -34.0% |
| Computer Sciences | 139 | 176 26.6% | 131 -25.6% |
| Engineering, Construction, Manufacturing & Design | 56 | 82 46.4% | 39 -52.4% |
| Health Sciences | 140 | 79 -43.6% | 7 -91.1% |
| Interdisciplinary Studies | N/O | 79 N/A | 124 57.0% |
| Miscellaneous (DV00, SP00, IA00, TR00) | 396 | 739 86.6% | 1,157 56.6% |
| Nursing and Life Sciences | 336 | 349 3.9% | 142 -59.3% |
| Public & Professional Services | 156 | 229 46.8% | 74 -67.7% |

Source: KMS #TEC0131

Note: Duplication is due to changes in major during the academic year.

N/O: Not Offered

Online Only Student Profile

Demographic Profile (Unduplicated)

Annual Credit Enrollment Trends (Unduplicated)

Credit Enrollment by Division (Unduplicated)

**Online Only Student
Demographic Profile (Unduplicated)
AY2019**

| | ANF | Percent | LAW | Percent | GTC | Percent |
|--------------------------------|------------|----------------|--------------|----------------|--------------|----------------|
| Ethnicity | | | | | | |
| American Indian/Alaskan Native | 0 | 0 | 4 | 0.2% | 4 | 0.1% |
| Asian | 61 | 14.1% | 172 | 7.6% | 231 | 8.6% |
| Black or African American | 114 | 26.4% | 952 | 41.8% | 1,063 | 39.4% |
| Hispanic/Latino | 41 | 9.5% | 328 | 14.4% | 369 | 13.7% |
| Nat. Hawaiian/Other Pacific Is | 0 | 0.0% | 7 | 0.3% | 7 | 0.3% |
| Two or more races | 21 | 4.9% | 109 | 4.8% | 129 | 4.8% |
| Unknown | 19 | 4.4% | 95 | 4.2% | 113 | 4.2% |
| White | 176 | 40.7% | 611 | 26.8% | 785 | 29.1% |
| Age Group | | | | | | |
| Under 21 years | 266 | 0.616 | 643 | 28.2% | 902 | 33.4% |
| 21-25 years | 61 | 14.1% | 494 | 21.7% | 555 | 20.5% |
| 26-30 years | 43 | 10.0% | 393 | 17.3% | 436 | 16.1% |
| 31-35 years | 22 | 5.1% | 236 | 10.4% | 258 | 9.6% |
| 36-40 years | 18 | 4.2% | 186 | 8.2% | 203 | 7.5% |
| Over 40 years | 22 | 5.1% | 326 | 14.3% | 347 | 12.8% |
| Gender | | | | | | |
| Female | 245 | 56.7% | 1,604 | 70.4% | 1,844 | 68.3% |
| Male | 187 | 43.3% | 674 | 29.6% | 857 | 31.7% |
| Educational Attainment | | | | | | |
| Less Than 12 | 247 | 57.2% | 514 | 22.6% | 755 | 28.0% |
| GED | 10 | 2.3% | 76 | 3.3% | 86 | 3.2% |
| High School Diploma | 60 | 13.9% | 643 | 28.2% | 702 | 26.0% |
| 1 - 3 Years Postsecondary | 97 | 22.5% | 899 | 39.5% | 994 | 36.8% |
| Bachelor's Degree | 15 | 3.5% | 127 | 5.6% | 142 | 5.3% |
| Greater than Bachelor's Degree | 3 | 0.7% | 19 | 0.8% | 22 | 0.8% |
| Total | 432 | 16.0% | 2,278 | 84.3% | 2,701 | 100.0% |

Source: KMS #TEC0131, TEC0123, TEC0160

**Online Only Student
Annual Credit Enrollment Trends (Unduplicated)
AY2017 - AY2019**

| | ANF | LAW | GTC |
|---------------|------------|--------------|--------------|
| AY2019 | 432 | 2,278 | 2,701 |
| Fall 2018 | 219 | 1,128 | 1,347 |
| Spring 2019 | 150 | 777 | 927 |
| Summer 2019 | 187 | 902 | 1,089 |
| AY2018 | 330 | 1,991 | 2,321 |
| Fall 2017 | 150 | 761 | 911 |
| Spring 2018 | 140 | 841 | 981 |
| Summer 2018 | 112 | 836 | 948 |
| AY2017 | 202 | 1,740 | 1,942 |
| Fall 2016 | 73 | 659 | 732 |
| Spring 2017 | 117 | 741 | 858 |
| Summer 2017 | 69 | 724 | 793 |

Source: KMS #TEC0160

N/A: Data is not applicable because ANF campus was not open.

Note: This report is run by home campus. A student is counted as only having one home campus per term, based on his or her primary major (Major 1). Duplication will occur when adding counts across all three terms in an academic year.

**Online Only Student
Total Credit Hour Enrollment Trends (Unduplicated)
AY2017 - AY2019**

| | ANF | LAW | GTC |
|---------------|--------------|---------------|---------------|
| AY2019 | 2,799 | 16,606 | 19,405 |
| Fall 2018 | 910 | 5,487 | 6,397 |
| Spring 2019 | 1,164 | 7,046 | 8,210 |
| Summer 2019 | 725 | 4,073 | 4,798 |
| AY2018 | 1,978 | 14,013 | 15,991 |
| Fall 2017 | 705 | 4,558 | 5,263 |
| Spring 2018 | 753 | 5,068 | 5,821 |
| Summer 2018 | 520 | 4,387 | 4,907 |
| AY2017 | 1,367 | 12,489 | 13,856 |
| Fall 2016 | 385 | 4,150 | 4,535 |
| Spring 2017 | 641 | 4,532 | 5,173 |
| Summer 2017 | 341 | 3,807 | 4,148 |

Source: KMS #TEC0160

N/A: Data is not applicable because ANF campus was not open.

Note: This report is run by home campus. A student is counted as only having one home campus per term, based on his or her primary major (Major 1).

**Online Only Student
Credit Enrollment by Division (Unduplicated)
AY2019**

| Division | Fall 2018 | | | Spring 2019 | | | Summer 2019 | | | AY2019 | | |
|------------------------------------------------------|------------|------------|--------------|-------------|--------------|--------------|-------------|------------|------------|------------|--------------|--------------|
| | ANF | LAW | GTC | ANF | LAW | GTC | ANF | LAW | GTC | ANF | LAW | GTC |
| Business Sciences | 39 | 245 | 284 | 45 | 279 | 324 | 35 | 182 | 217 | 93 | 531 | 621 |
| Computer Sciences | 16 | 90 | 106 | 32 | 118 | 150 | 35 | 72 | 107 | 71 | 238 | 308 |
| Engineering, Construction, Manufacturing & Design | 0 | 46 | 46 | 0 | 37 | 37 | 1 | 40 | 41 | 1 | 112 | 113 |
| Health Sciences | 1 | 18 | 19 | 1 | 14 | 15 | 1 | 10 | 11 | 3 | 37 | 40 |
| Interdisciplinary Studies | 9 | 251 | 260 | 8 | 321 | 329 | 1 | 273 | 274 | 13 | 722 | 735 |
| Miscellaneous* | 116 | 155 | 271 | 121 | 226 | 347 | 68 | 126 | 194 | 229 | 384 | 608 |
| Nursing and Life Sciences | 2 | 30 | 32 | 1 | 47 | 48 | 0 | 14 | 14 | 2 | 80 | 82 |
| Public & Professional Services | 4 | 67 | 71 | 11 | 86 | 97 | 9 | 60 | 69 | 20 | 174 | 194 |
| Total | 187 | 902 | 1,089 | 219 | 1,128 | 1,347 | 150 | 777 | 927 | 432 | 2,278 | 2,701 |

Source: KMS #TEC0131

*Student major is DV00, IA00, TR00, or SP00 (not a specific program).

Special Population Student Profile

Demographic Profile (Unduplicated)

Non-Traditional

Disabled

Economically Disadvantaged

Limited English Proficient

Single Parent

Displaced Homemaker

Nontraditional: Status is based on if the program trains for occupations that have a labor force distribution where one gender comprises less than 25% of the labor force. The gender with less than 25% is the under-represented gender. The student's primary major determines whether a student is enrolled in a nontraditional program.

Disabled Person: Any person who has a physical or mental impairment which substantially limits one or more major life activities, such as caring for one's self, performing manual tasks, walking, seeing, hearing, speaking, breathing, learning, or working.

Economically Disadvantaged: Credit students are reported as economically disadvantaged if the student is a needs-based financial aid recipient (Pell or TANF).

Limited English Proficiency (LEP): A secondary school student, an adult, or an out-of-school youth, who has limited ability in speaking, reading, writing, or understanding the English language, and whose native language is a language other than English; or who lives in a family or community environment in which a language other than English is the dominant language.

Single Parent (SPAR): An individual who is unmarried or legally separated from a spouse, and either has a minor child or children for which the parent has either custody or joint custody or is pregnant.

Displaced Homemaker (DHOM): A student is coded as displaced homemaker when the student is an individual who has worked primarily without remuneration to care for a home and family, and for that reason has diminished marketable skills; has been dependent on the income of another family member but is no longer supported by that income, or is a parent whose youngest dependent child will become ineligible to receive assistance under Part A of Title IV of the Social Security Act (32 U.S.C. 601 et seq.) no later than two years after the date on which the parent applies for assistance under this title; and is unemployed and experiencing difficulty in obtaining or upgrading employment.

**Special Populations - Nontraditional
Demographic Profile
AY2019**

| Demographic | ANF | Percent | LAW | Percent | GTC | Percent |
|--------------------------------------|------------|----------------|------------|----------------|------------|----------------|
| Ethnicity | | | | | | |
| American Indian/Alaskan Native | 0 | 0.0% | 1 | 0.2% | 1 | 0.1% |
| Asian | 0 | 0.0% | 58 | 9.3% | 58 | 8.4% |
| Black or African American | 28 | 41.8% | 265 | 42.4% | 293 | 42.3% |
| Hispanic/Latino | 10 | 14.9% | 102 | 16.3% | 112 | 16.2% |
| Nat. Hawaiian/Other Pacific Islander | 0 | 0.0% | 1 | 0.2% | 1 | 0.1% |
| Two or more races | 1 | 1.5% | 25 | 4.0% | 26 | 3.8% |
| Unknown | 8 | 11.9% | 26 | 4.2% | 34 | 4.9% |
| White | 20 | 29.9% | 147 | 23.5% | 167 | 24.1% |
| Age Group | | | | | | |
| Under 21 years | 9 | 13.4% | 74 | 11.8% | 83 | 12.0% |
| 21-25 years | 20 | 29.9% | 202 | 32.3% | 222 | 32.1% |
| 26-30 years | 15 | 22.4% | 139 | 22.2% | 154 | 22.3% |
| 31-35 years | 4 | 6.0% | 67 | 10.7% | 71 | 10.3% |
| 36-40 years | 7 | 10.4% | 41 | 6.6% | 48 | 6.9% |
| Over 40 years | 12 | 17.9% | 102 | 16.3% | 114 | 16.5% |
| Gender | | | | | | |
| Female | 56 | 83.6% | 495 | 79.2% | 551 | 79.6% |
| Male | 11 | 16.4% | 130 | 20.8% | 141 | 20.4% |
| Educational Attainment | | | | | | |
| Less Than 12 | 0 | 0.0% | 10 | 1.6% | 10 | 1.4% |
| GED | 2 | 3.0% | 38 | 6.1% | 40 | 5.8% |
| High School Diploma | 36 | 53.7% | 296 | 47.4% | 332 | 48.0% |
| 1-3 Years Post-Secondary | 28 | 41.8% | 269 | 43.0% | 297 | 42.9% |
| Bachelor's Degree | 1 | 1.5% | 12 | 1.9% | 13 | 1.9% |
| Greater than Bachelor's | 0 | 0.0% | 0 | 0.0% | 0 | 0.0% |
| | 67 | 9.7% | 625 | 90.3% | 692 | 100.0% |

Source: KMS #TEC0691, #TEC0131, TEC0123

Special Populations - Disabled
Demographic Profile
AY2019

| Demographic | ANF | Percent | LAW | Percent | GTC | Percent |
|--------------------------------------|------------|----------------|------------|----------------|------------|----------------|
| Ethnicity | | | | | | |
| American Indian/Alaskan Native | 0 | 0.0% | 1 | 0.4% | 1 | 0.3% |
| Asian | 2 | 4.0% | 12 | 5.1% | 14 | 4.9% |
| Black or African American | 11 | 22.0% | 83 | 35.0% | 94 | 32.8% |
| Hispanic/Latino | 4 | 8.0% | 20 | 8.4% | 24 | 8.4% |
| Nat. Hawaiian/Other Pacific Islander | 0 | 0.0% | 0 | 0.0% | 0 | 0.0% |
| Two or more races | 1 | 2.0% | 13 | 5.5% | 14 | 4.9% |
| Unknown | 3 | 6.0% | 13 | 5.5% | 16 | 5.6% |
| White | 29 | 58.0% | 95 | 40.1% | 124 | 43.2% |
| Age Group | | | | | | |
| Under 21 years | 15 | 30.0% | 24 | 10.1% | 39 | 13.6% |
| 21-25 years | 28 | 56.0% | 87 | 36.7% | 115 | 40.1% |
| 26-30 years | 6 | 12.0% | 34 | 14.3% | 40 | 13.9% |
| 31-35 years | 0 | 0.0% | 24 | 10.1% | 24 | 8.4% |
| 36-40 years | 0 | 0.0% | 22 | 9.3% | 22 | 7.7% |
| Over 40 years | 1 | 2.0% | 46 | 19.4% | 47 | 16.4% |
| Gender | | | | | | |
| Female | 19 | 38.0% | 129 | 54.4% | 148 | 51.6% |
| Male | 31 | 62.0% | 108 | 45.6% | 139 | 48.4% |
| Educational Attainment | | | | | | |
| Less Than 12 | 0 | 0.0% | 2 | 0.8% | 2 | 0.7% |
| GED | 0 | 0.0% | 9 | 3.8% | 9 | 3.1% |
| High School Diploma | 45 | 90.0% | 133 | 56.1% | 178 | 62.0% |
| 1-3 Years Post-Secondary | 5 | 10.0% | 91 | 38.4% | 96 | 33.4% |
| Bachelor's Degree | 0 | 0.0% | 2 | 0.8% | 2 | 0.7% |
| Greater than Bachelor's | 0 | 0.0% | 0 | 0.0% | 0 | 0.0% |
| | 50 | 17.4% | 237 | 82.6% | 287 | 100.0% |

Source: KMS #TES0691, #TEC0131, TEC0123

**Special Populations – Economically Disadvantaged
Demographic Profile
AY2019**

| Demographic | ANF | Percent | LAW | Percent | GTC | Percent |
|--------------------------------------|------------|----------------|--------------|----------------|--------------|----------------|
| Ethnicity | | | | | | |
| American Indian/Alaskan Native | 0 | 0.0% | 14 | 0.3% | 14 | 0.2% |
| Asian | 6 | 2.1% | 409 | 7.5% | 415 | 7.3% |
| Black or African American | 122 | 43.1% | 2,448 | 45.1% | 2,570 | 45.0% |
| Hispanic/Latino | 52 | 18.4% | 947 | 17.4% | 999 | 17.5% |
| Nat. Hawaiian/Other Pacific Islander | 0 | 0.0% | 12 | 0.2% | 12 | 0.2% |
| Two or more races | 8 | 2.8% | 190 | 3.5% | 198 | 3.5% |
| Unknown | 14 | 4.9% | 249 | 4.6% | 263 | 4.6% |
| White | 81 | 28.6% | 1,161 | 21.4% | 1,242 | 21.7% |
| Age Group | | | | | | |
| Under 21 years | 37 | 13.1% | 622 | 11.5% | 659 | 11.5% |
| 21-25 years | 79 | 27.9% | 1,724 | 31.7% | 1,803 | 31.6% |
| 26-30 years | 74 | 26.1% | 1,241 | 22.9% | 1,315 | 23.0% |
| 31-35 years | 28 | 9.9% | 690 | 12.7% | 718 | 12.6% |
| 36-40 years | 28 | 9.9% | 476 | 8.8% | 504 | 8.8% |
| Over 40 years | 37 | 13.1% | 677 | 12.5% | 714 | 12.5% |
| Gender | | | | | | |
| Female | 151 | 53.4% | 3,564 | 65.6% | 3,715 | 65.0% |
| Male | 132 | 46.6% | 1,866 | 34.4% | 1,998 | 35.0% |
| Educational Attainment | | | | | | |
| Less Than 12 | 1 | 0.4% | 44 | 0.8% | 45 | 0.8% |
| GED | 14 | 4.9% | 295 | 5.4% | 309 | 5.4% |
| High School Diploma | 135 | 47.7% | 2,534 | 46.7% | 2,669 | 46.7% |
| 1-3 Years Post-Secondary | 132 | 46.6% | 2,544 | 46.9% | 2,676 | 46.8% |
| Bachelor's Degree | 1 | 0.4% | 13 | 0.2% | 14 | 0.2% |
| Greater than Bachelor's | 0 | 0.0% | 0 | 0.0% | 0 | 0.0% |
| | 283 | 5.0% | 5,430 | 95.0% | 5,713 | 100.0% |

Source: KMS #TEC0691, #TEC0131, TEC0123

**Special Populations – Limited English Proficient
Demographic Profile
AY2019**

| Demographic | ANF | Percent | LAW | Percent | GTC | Percent |
|--------------------------------------|------------|----------------|------------|----------------|------------|----------------|
| Ethnicity | | | | | | |
| American Indian/Alaskan Native | 0 | 0.0% | 1 | 0.9% | 1 | 0.9% |
| Asian | 0 | 0.0% | 27 | 23.9% | 27 | 23.1% |
| Black or African American | 0 | 0.0% | 33 | 29.2% | 33 | 28.2% |
| Hispanic/Latino | 2 | 50.0% | 37 | 32.7% | 39 | 33.3% |
| Nat. Hawaiian/Other Pacific Islander | 0 | 0.0% | 0 | 0.0% | 0 | 0.0% |
| Two or more races | 0 | 0.0% | 0 | 0.0% | 0 | 0.0% |
| Unknown | 0 | 0.0% | 0 | 0.0% | 0 | 0.0% |
| White | 2 | 50.0% | 15 | 13.3% | 17 | 14.5% |
| Age Group | | | | | | |
| Under 21 years | 0 | 0.0% | 0 | 0.0% | 0 | 0.0% |
| 21-25 years | 1 | 25.0% | 11 | 9.7% | 12 | 10.3% |
| 26-30 years | 0 | 0.0% | 23 | 20.4% | 23 | 19.7% |
| 31-35 years | 0 | 0.0% | 35 | 31.0% | 35 | 29.9% |
| 36-40 years | 2 | 50.0% | 19 | 16.8% | 21 | 17.9% |
| Over 40 years | 1 | 25.0% | 25 | 22.1% | 26 | 22.2% |
| Gender | | | | | | |
| Female | 3 | 75.0% | 76 | 67.3% | 79 | 67.5% |
| Male | 1 | 25.0% | 37 | 32.7% | 38 | 32.5% |
| Educational Attainment | | | | | | |
| Less Than 12 | 0 | 0.0% | 0 | 0.0% | 0 | 0.0% |
| GED | 0 | 0.0% | 10 | 9.0% | 10 | 8.8% |
| High School Diploma | 3 | 75.0% | 58 | 52.3% | 60 | 52.6% |
| 1-3 Years Post-Secondary | 1 | 25.0% | 37 | 33.3% | 38 | 33.3% |
| Bachelor's Degree | 0 | 0.0% | 4 | 3.6% | 4 | 3.5% |
| Greater than Bachelor's | 0 | 0.0% | 2 | 1.8% | 2 | 1.8% |
| | 4 | 3.4% | 113 | 96.6% | 117 | 100.0% |

Source: KMS #TES0691, #TEC0131, TEC0123

**Special Populations – Single Parent
Demographic Profile
AY2019**

| Demographic | ANF | Percent | LAW | Percent | GTC | Percent |
|--------------------------------------|------------|----------------|------------|----------------|------------|----------------|
| Ethnicity | | | | | | |
| American Indian/Alaskan Native | 0 | 0.0% | 0 | 0.0% | 0 | 0.0% |
| Asian | 0 | 0.0% | 9 | 4.4% | 9 | 4.1% |
| Black or African American | 6 | 46.2% | 102 | 50.0% | 108 | 49.8% |
| Hispanic/Latino | 1 | 7.7% | 27 | 13.2% | 28 | 12.9% |
| Nat. Hawaiian/Other Pacific Islander | 0 | 0.0% | 1 | 0.5% | 1 | 0.5% |
| Two or more races | 1 | 7.7% | 11 | 5.4% | 12 | 5.5% |
| Unknown | 1 | 7.7% | 9 | 4.4% | 10 | 4.6% |
| White | 4 | 30.8% | 45 | 22.1% | 49 | 22.6% |
| Age Group | | | | | | |
| Under 21 years | 1 | 7.7% | 0 | 0.0% | 1 | 0.5% |
| 21-25 years | 0 | 0.0% | 10 | 4.9% | 10 | 4.6% |
| 26-30 years | 0 | 0.0% | 28 | 13.7% | 28 | 12.9% |
| 31-35 years | 3 | 23.1% | 43 | 21.1% | 46 | 21.2% |
| 36-40 years | 6 | 46.2% | 52 | 25.5% | 58 | 26.7% |
| Over 40 years | 3 | 23.1% | 71 | 34.8% | 74 | 34.1% |
| Gender | | | | | | |
| Female | 11 | 84.6% | 180 | 88.2% | 191 | 88.0% |
| Male | 2 | 15.4% | 24 | 11.8% | 26 | 12.0% |
| Educational Attainment | | | | | | |
| Less Than 12 | 1 | 7.7% | 0 | 0.0% | 1 | 0.5% |
| GED | 1 | 7.7% | 15 | 7.4% | 16 | 7.4% |
| High School Diploma | 3 | 23.1% | 56 | 27.5% | 59 | 27.2% |
| 1-3 Years Post-Secondary | 6 | 46.2% | 126 | 61.8% | 132 | 60.8% |
| Bachelor's Degree | 2 | 15.4% | 7 | 3.4% | 9 | 4.1% |
| Greater than Bachelor's | 1 | 7.7% | 0 | 0.0% | 1 | 0.5% |
| | 13 | 6.0% | 204 | 94.0% | 217 | 100.0% |

Source: KMS #TES0691, #TEC0131, TEC0123

**Special Populations – Displaced Homemaker
Demographic Profile
AY2019**

| Demographic | ANF | Percent | LAW | Percent | GTC | Percent |
|--------------------------------------|------------|----------------|------------|----------------|------------|----------------|
| Ethnicity | | | | | | |
| American Indian/Alaskan Native | 0 | 0.0% | 0 | 0.0% | 0 | 0.0% |
| Asian | 0 | 0.0% | 3 | 2.3% | 3 | 2.2% |
| Black or African American | 4 | 50.0% | 66 | 51.6% | 70 | 51.5% |
| Hispanic/Latino | 0 | 0.0% | 8 | 6.3% | 8 | 5.9% |
| Nat. Hawaiian/Other Pacific Islander | 0 | 0.0% | 1 | 0.8% | 1 | 0.7% |
| Two or more races | 1 | 12.5% | 11 | 8.6% | 12 | 8.8% |
| Unknown | | 0.0% | 7 | 5.5% | 7 | 5.1% |
| White | 3 | 37.5% | 32 | 25.0% | 35 | 25.7% |
| Age Group | | | | | | |
| Under 21 years | 0 | 0.0% | 0 | 0.0% | 0 | 0.0% |
| 21-25 years | 0 | 0.0% | 15 | 11.7% | 15 | 11.0% |
| 26-30 years | 1 | 12.5% | 12 | 9.4% | 13 | 9.6% |
| 31-35 years | 0 | 0.0% | 27 | 21.1% | 27 | 19.9% |
| 36-40 years | 3 | 37.5% | 19 | 14.8% | 22 | 16.2% |
| Over 40 years | 4 | 50.0% | 55 | 43.0% | 59 | 43.4% |
| Gender | | | | | | |
| Female | 7 | 87.5% | 106 | 82.8% | 113 | 83.1% |
| Male | 1 | 12.5% | 22 | 17.2% | 23 | 16.9% |
| Educational Attainment | | | | | | |
| Less Than 12 | 0 | 0.0% | 0 | 0.0% | 0 | 0.0% |
| GED | 0 | 0.0% | 6 | 4.7% | 6 | 4.4% |
| High School Diploma | 4 | 50.0% | 35 | 27.3% | 39 | 28.7% |
| 1-3 Years Post-Secondary | 4 | 50.0% | 80 | 62.5% | 84 | 61.8% |
| Bachelor's Degree | 0 | 0.0% | 7 | 5.5% | 7 | 5.1% |
| Greater than Bachelor's | 0 | 0.0% | 0 | 0.0% | 0 | 0.0% |
| | 8 | 5.9% | 128 | 94.1% | 136 | 100.0% |

Source: KMS #TES0691, #TEC0131, TEC0123

Learning Support Student Profile

Learning Support Enrollees

Demographic Profile (Unduplicated)

Annual Enrollment Trends (Unduplicated)

**All Learning Support Enrollees
Demographic Profile (Unduplicated)
AY2019**

| | ANF | Percent | LAW | Percent | GTC | Percent |
|----------------------------------------|-----------|-------------|--------------|--------------|--------------|---------------|
| Ethnicity | | | | | | |
| American Indian/Alaskan Native | 0 | 0.0% | 7 | 0.5% | 7 | 0.4% |
| Asian | 1 | 1.1% | 130 | 8.9% | 131 | 8.4% |
| Black or African American | 32 | 33.7% | 700 | 47.7% | 732 | 46.9% |
| Hispanic/Latino | 14 | 14.7% | 289 | 19.7% | 303 | 19.4% |
| Native Hawaiian/Other Pacific Islander | 0 | 0.0% | 2 | 0.1% | 2 | 0.1% |
| Two or more races | 3 | 3.2% | 30 | 2.0% | 33 | 2.1% |
| Unknown | 5 | 5.3% | 50 | 3.4% | 55 | 3.5% |
| White | 40 | 42.1% | 258 | 17.6% | 298 | 19.1% |
| Age Group | | | | | | |
| Under 21 years | 28 | 29.5% | 292 | 19.9% | 320 | 20.5% |
| 21-25 years | 32 | 33.7% | 477 | 32.5% | 509 | 32.6% |
| 26-30 years | 14 | 14.7% | 263 | 17.9% | 277 | 17.7% |
| 31-35 years | 4 | 4.2% | 164 | 11.2% | 168 | 10.8% |
| 36-40 years | 8 | 8.4% | 104 | 7.1% | 112 | 7.2% |
| Over 40 years | 9 | 9.5% | 166 | 11.3% | 175 | 11.2% |
| Gender | | | | | | |
| Female | 50 | 52.6% | 917 | 62.6% | 967 | 61.9% |
| Male | 45 | 47.4% | 549 | 37.4% | 594 | 38.1% |
| Educational Attainment | | | | | | |
| Less than 12 | 0 | 0.0% | 5 | 0.3% | 5 | 0.3% |
| GED | 2 | 2.1% | 86 | 5.9% | 88 | 5.6% |
| High School Diploma | 66 | 69.5% | 932 | 63.6% | 998 | 63.9% |
| 1-3 Post-Secondary | 27 | 28.4% | 440 | 30.0% | 467 | 29.9% |
| Bachelor's Degree | 0 | 0.0% | 3 | 0.2% | 3 | 0.2% |
| Total | 95 | 6.1% | 1,466 | 93.9% | 1,561 | 100.0% |

Source: KMS #DC339, #DC131

**All Learning Support Enrollees
Annual Enrollment Trend (Unduplicated)
AY2017 - AY2019**

| | AY2017 | AY2018 | % Change | AY2019 | % Change |
|---------------------------|--------------|--------------|---------------|--------------|--------------|
| Math | 1,392 | 1,204 | -13.5% | 1,113 | -7.6% |
| ANF | 51 | 63 | 23.5% | 67 | 6.3% |
| LAW | 1,341 | 1,141 | -14.9% | 1,046 | -8.3% |
| English & Reading | 609 | 657 | 7.9% | 682 | 3.8% |
| ANF | 36 | 37 | 2.8% | 44 | 18.9% |
| LAW | 573 | 620 | 8.2% | 638 | 2.9% |
| Total Duplicated | 2,491 | 1,995 | -19.9% | 1,927 | -3.4% |
| Total Unduplicated | 1,775 | 1,609 | -9.4% | 1,561 | -3.0% |

Source: KMS #TEC0322, #TEC0131

General Education Profile

| Student Enrollment by Course (Duplicated)

| Course Pass Rates (Duplicated)

General Education
Student Enrollment by Course (Duplicated)
AY2017 - AY2019

| | | 2017 | 2018 | % Change | 2019 | % Change |
|------------------------------------------------|-----------|---------------|---------------|--------------|---------------|--------------|
| Area I - Language Arts/Communication | | | | | | |
| Composition & Rhetoric | ENGL1101 | 2,778 | 3,511 | 26.4% | 3,689 | 5.1% |
| Literature & Composition | ENGL1102 | 947 | 1,101 | 16.3% | 1,370 | 24.4% |
| Public Speaking | SPCH1101 | 410 | 416 | 1.5% | 384 | -7.7% |
| Area II - Social/Behavioral Sciences | | | | | | |
| Macroeconomics | ECON 2105 | 209 | 297 | 42.1% | 280 | -5.7% |
| Microeconomics | ECON 2106 | 93 | 142 | 52.7% | 147 | 3.5% |
| World History I | HIST 1111 | 361 | 562 | 55.7% | 636 | 13.2% |
| World History II | HIST 1112 | 75 | 80 | 6.7% | 68 | -15.0% |
| U.S. History I | HIST 2111 | 467 | 560 | 19.9% | 770 | 37.5% |
| U.S. History II | HIST 2112 | 122 | 95 | -22.1% | 151 | 58.9% |
| American Government | POLS 1101 | 511 | 648 | 26.8% | 883 | 36.3% |
| Intro to Psychology | PSYC 1101 | 1,803 | 1,966 | 9.0% | 2,100 | 6.8% |
| Intro to Sociology | SOCI 1101 | 620 | 639 | 3.1% | 765 | 19.7% |
| Area III - Natural Sciences/Mathematics | | | | | | |
| Biology I | BIOL1111 | 333 | 315 | -5.4% | 352 | 11.7% |
| Biology I Lab | BIOL1111L | 316 | 302 | -4.4% | 346 | 14.6% |
| Chemistry I | CHEM1211 | 368 | 456 | 23.9% | 510 | 11.8% |
| Chemistry I Lab | CHEM1211L | 213 | 255 | 19.7% | 295 | 15.7% |
| Chemistry II | CHEM1212 | 41 | 43 | 4.9% | 39 | -9.3% |
| Chemistry II Lab | CHEM1212L | 38 | 40 | 5.3% | 37 | -7.5% |
| College Algebra | MATH1111 | 2,248 | 3,316 | 47.5% | 3,529 | 6.4% |
| Precalculus | MATH1113 | 218 | 284 | 30.3% | 381 | 34.2% |
| Intro to Statistics | MATH1127 | 396 | 488 | 23.2% | 618 | 26.6% |
| Calculus I | MATH1131 | 31 | 52 | 67.7% | 81 | 55.8% |
| Calculus II | MATH1132 | 17 | 13 | -23.5% | 20 | 53.8% |
| Physical Science I | PHSC1111 | 41 | 46 | 12.2% | 76 | 65.2% |
| Conceptual Physics Lab | PHYS1110 | 166 | 178 | 7.2% | 178 | 0.0% |
| Conceptual Physics | PHYS1110L | 165 | 177 | 7.3% | 174 | -1.7% |
| Area IV - Humanities/Fine Arts | | | | | | |
| Art Appreciation | ARTS 1101 | 317 | 349 | 10.1% | 389 | 11.5% |
| American Literature | ENGL 2130 | 112 | 139 | 24.1% | 195 | 40.3% |
| Intro to Humanities | HUMN 1101 | 934 | 976 | 4.5% | 1,047 | 7.3% |
| Music Appreciation | MUSC 1101 | 312 | 433 | 38.8% | 490 | 13.2% |
| Total - All Areas | | 14,662 | 17,879 | 21.9% | 20,000 | 11.9% |

Source: Gwinnett Tech Crystal Report - Course Pass Rate Report

| General Education Course Pass Rates AY2017 - AY2019 | | | | | | | | | | | |
|-----------------------------------------------------------|--------------|--------------|--------------|------------------|--------------|--------------|--------------|------------------|--------------|--------------|--------------|
| AY2017 | | | AY2018 | | | AY2019 | | | | | |
| | Enrolled | Fail | Pass | Attrition (W) | Enrolled | Fail | Pass | Attrition (W) | Enrolled | Fail | Pass |
| Area I - Language Arts/Communication | 4,135 | 18.2% | 68.4% | 13.5% | 5,028 | 16.6% | 75.6% | 7.8% | 5,443 | 18.6% | 75.0% |
| Composition & Rhetoric ENGL1101 | 2,778 | 22.4% | 64.9% | 12.7% | 3,511 | 19.7% | 73.7% | 6.7% | 3,689 | 21.9% | 73.3% |
| Literature & Composition ENGL1102 | 947 | 11.4% | 74.0% | 14.6% | 1,101 | 11.8% | 78.5% | 9.7% | 1,370 | 13.7% | 76.9% |
| Public Speaking SPCH1101 | 410 | 5.1% | 79.0% | 15.9% | 416 | 3.8% | 83.9% | 12.3% | 384 | 3.4% | 85.2% |
| Area II - Social/Behavioral Sciences | 4,261 | 14.7% | 78.9% | 6.5% | 4,989 | 15.5% | 78.5% | 6.0% | 5,800 | 15.4% | 78.8% |
| Macroeconomics ECON2105 | 209 | 40.2% | 45.9% | 13.9% | 297 | 36.0% | 52.9% | 11.1% | 280 | 37.5% | 56.4% |
| Microeconomics ECON2106 | 93 | 30.1% | 52.7% | 17.2% | 142 | 36.6% | 52.1% | 11.3% | 147 | 30.6% | 60.5% |
| World History I HIST1111 | 361 | 12.7% | 79.8% | 7.5% | 562 | 16.4% | 77.2% | 6.4% | 636 | 17.1% | 75.3% |
| World History II HIST1112 | 75 | 5.3% | 92.0% | 2.7% | 80 | 10.0% | 85.0% | 5.0% | 68 | 13.2% | 80.9% |
| U.S. History I HIST2111 | 467 | 5.4% | 91.2% | 3.4% | 560 | 9.8% | 84.6% | 5.5% | 770 | 11.6% | 83.4% |
| U.S. History II HIST2112 | 122 | 7.4% | 86.9% | 5.7% | 95 | 5.3% | 88.4% | 6.3% | 151 | 7.3% | 91.4% |
| American Government POLS1101 | 511 | 8.4% | 85.9% | 5.7% | 648 | 9.3% | 87.0% | 3.7% | 883 | 7.8% | 89.8% |
| Intro to Psychology PSYC1101 | 1,803 | 17.7% | 75.2% | 7.0% | 1,966 | 16.9% | 76.3% | 6.8% | 2,100 | 17.9% | 73.9% |
| Intro to Sociology SOCI1101 | 620 | 10.6% | 85.6% | 3.7% | 639 | 9.9% | 87.8% | 2.3% | 765 | 10.6% | 86.7% |

**General Education
Course Pass Rates, Cont.
AY2017 - AY2019**

| | AY2017 | | | | AY2018 | | | | AY2019 | | | |
|------------------------------------------------|---------------|--------------|--------------|---------------|---------------|--------------|--------------|---------------|---------------|--------------|--------------|---------------|
| | Enrolled | Fail | Pass | Attrition (W) | Enrolled | Fail | Pass | Attrition (W) | Enrolled | Fail | Pass | Attrition (W) |
| Area III - Natural Sciences/Mathematics | 4,591 | 16.5% | 62.3% | 21.2% | 5,965 | 21.9% | 61.3% | 16.8% | 6,636 | 21.9% | 61.9% | 16.2% |
| Biology I | 333 | 30.3% | 50.2% | 19.5% | 315 | 30.2% | 51.1% | 18.7% | 352 | 23.0% | 61.1% | 15.9% |
| Biology I Lab | 316 | 13.3% | 66.8% | 19.9% | 302 | 22.8% | 57.6% | 19.5% | 346 | 24.3% | 60.1% | 15.6% |
| Chemistry I | 368 | 17.1% | 43.5% | 39.4% | 456 | 18.2% | 55.3% | 26.5% | 510 | 19.2% | 46.7% | 34.1% |
| Chemistry I Lab | 213 | 13.6% | 46.9% | 39.4% | 255 | 18.4% | 54.1% | 27.5% | 295 | 13.2% | 51.5% | 35.3% |
| Chemistry II | 41 | 12.2% | 51.2% | 36.6% | 43 | 9.3% | 81.4% | 9.3% | 39 | 7.7% | 84.6% | 7.7% |
| Chemistry II Lab | 38 | 2.6% | 57.9% | 39.5% | 40 | 5.0% | 87.5% | 7.5% | 37 | 2.7% | 89.2% | 8.1% |
| College Algebra | 2,248 | 18.0% | 61.4% | 20.6% | 3,316 | 23.8% | 60.0% | 16.3% | 3,529 | 24.3% | 61.6% | 14.1% |
| Precalculus | 218 | 20.2% | 60.6% | 19.3% | 284 | 23.6% | 62.3% | 14.1% | 381 | 23.9% | 61.4% | 14.7% |
| Intro to Statistics | 396 | 12.9% | 77.5% | 9.6% | 488 | 20.7% | 67.8% | 11.5% | 618 | 22.2% | 67.8% | 10.0% |
| Calculus I | 31 | 9.7% | 80.6% | 9.7% | 52 | 7.7% | 75.0% | 17.3% | 81 | 13.6% | 70.4% | 16.0% |
| Calculus II | 17 | 5.9% | 76.5% | 17.6% | 13 | 7.7% | 69.2% | 23.1% | 20 | 20.0% | 65.0% | 15.0% |
| Physical Science I | 41 | 14.6% | 78.0% | 7.3% | 46 | 15.2% | 80.4% | 4.3% | 76 | 30.3% | 64.5% | 5.3% |
| Conceptual Physics Lab | 166 | 3.0% | 86.7% | 10.2% | 178 | 12.9% | 77.5% | 9.6% | 178 | 9.0% | 78.7% | 12.4% |
| Conceptual Physics | 165 | 0.6% | 89.1% | 10.3% | 177 | 8.5% | 81.9% | 9.6% | 174 | 5.2% | 82.2% | 12.6% |
| Area IV - Humanities/Fine Arts | 1,675 | 12.8% | 75.2% | 12.0% | 1,897 | 16.3% | 75.7% | 8.0% | 2,121 | 14.7% | 78.3% | 7.0% |
| Art Appreciation | 317 | 7.3% | 84.9% | 7.9% | 349 | 14.0% | 81.1% | 4.9% | 389 | 12.6% | 81.2% | 6.2% |
| American Literature | 112 | 12.5% | 75.9% | 11.6% | 139 | 8.6% | 82.7% | 8.6% | 195 | 9.7% | 84.1% | 6.2% |
| Intro to Humanities | 934 | 15.2% | 72.7% | 12.1% | 976 | 16.1% | 78.0% | 5.9% | 1,047 | 13.3% | 81.7% | 5.1% |
| Music Appreciation | 312 | 11.5% | 72.4% | 16.0% | 433 | 21.2% | 64.0% | 14.8% | 490 | 21.4% | 66.5% | 12.0% |
| Total - All Areas | 14,662 | 16.0% | 70.3% | 13.7% | 17,879 | 18.1% | 71.6% | 10.3% | 20,000 | 18.4% | 72.1% | 9.5% |

Source: Gwinnett Tech Crystal Report – Course Pass Rate Report

Retention Statistics

Overall Fall-to-Fall Retention Rates (Unduplicated)

Fall-to-Fall Retention Rates by Program (Unduplicated)

Retention Statistics
Fall-to-Fall Retention Rates
Reporting Years 2017 - AY2019

| | 2017 | 2018 | 2019 |
|------------------------|--------------|--------------|--------------|
| Fall Beginning Cohort* | 1,379 | 1,509 | 1,764 |
| Retained** | 931 | 1,022 | 1,264 |
| Retention Rate | 67.5% | 67.7% | 71.7% |

Source: KMS #TEC0200

*Fall Beginning Cohort consists of students that meet the following criteria:

- a) Regular admits only (no developmental, no provisional, no special admits)
- b) All major code levels, including those ending in zero (includes TCCs, Diplomas, Degrees, and also those students not in an award program)
- c) All student types except no high school (code H) and no transient (code A)
- d) First-time at that college either Summer or Fall (exclusive of previous high-school enrollment)
- e) Can be full time or part time

**Students from the cohort are counted as retained, in exactly one category using the following priority:

- (1) Graduated from this same college (or the administratively merged college, if applicable) in any program for any term during first or second year
- (2) Graduated from a different TCSG college in any program for any term during first or second year
- (3) Enrolled at this same college (or the administratively merged college, if applicable) in any program at least one term during second year
- (4) Enrolled at a different TCSG college in any program at least one term during second year
- (5) Enrolled at a USG (University System of Georgia) college in any program at least one term during second year, based on a National Student Clearinghouse data match

Retention Statistics
Retention Rates by Program
Reporting Years 2017 - 2019

| Program | Major Code | Award Level | 2017 | | Reporting Year 2018 | | 2019 | |
|--------------------------------------------------|------------|-------------|--------|------|---------------------|------|--------|------|
| | | | Cohort | Rate | Cohort | Rate | Cohort | Rate |
| Accounting | AC12 | Diploma | 19 | 74% | 12 | 83% | 20 | 75% |
| Accounting | AC13 | Degree | 22 | 68% | 22 | 68% | 35 | 94% |
| Air Conditioning Technology | ACT2 | Diploma | 20 | 60% | 12 | 67% | 22 | 59% |
| Air Conditioning Technology | ACT3 | Degree | 10 | 80% | 12 | 58% | 16 | 75% |
| Associate Degree Nursing Paramedic Bridge Option | AD33 | Degree | 1 | 100% | 1 | 100% | 0 | N/A |
| Automotive Fundamentals | AF12 | Diploma | 9 | 67% | 14 | 64% | 21 | 76% |
| Administrative Support Assistant | AS21 | TCC | 1 | 100% | 0 | N/A | 0 | N/A |
| Automotive Technology | AT23 | Degree | 17 | 65% | 23 | 91% | 25 | 84% |
| Air Conditioning System Maintenance Technician | AZ21 | TCC | 0 | N/A | 1 | 100% | 0 | N/A |
| Barbering | BA12 | Diploma | 3 | 67% | | N/A | 3 | 67% |
| Business Technology | BA22 | Diploma | 17 | 76% | 9 | 56% | 3 | 33% |
| Business Technology | BA23 | Degree | 10 | 60% | 7 | 86% | 8 | 75% |
| Baking and Pastry Specialist | BA51 | TCC | 0 | N/A | 0 | N/A | 2 | 0% |
| Bioscience Environmental Laboratory Technologist | BED1 | TCC | 0 | N/A | 1 | 100% | 0 | N/A |
| Building and Facilities Maintenance | BM22 | Diploma | 3 | 33% | 1 | 100% | 0 | N/A |
| Bioscience Technology | BT13 | Degree | 1 | 100% | 0 | N/A | 0 | N/A |
| Carpentry | CA22 | Diploma | 4 | 75% | 1 | 100% | 6 | 17% |
| Culinary Arts | CA43 | Degree | 9 | 89% | 11 | 82% | 15 | 73% |
| Culinary Arts | CA44 | Diploma | 9 | 56% | 6 | 67% | 2 | 0% |
| Computerized Accounting Specialist | CAY1 | TCC | 5 | 80% | 2 | 100% | 0 | N/A |
| Commercial Construction Management | CC13 | Degree | 5 | 40% | 13 | 62% | 17 | 53% |
| Chrysler CAP | CC23 | Degree | 9 | 89% | 7 | 86% | 2 | 100% |
| Commercial Construction Estimator | CCK1 | TCC | 1 | 100% | 0 | N/A | 2 | 100% |
| Commercial Construction Contract Administrator | CCL1 | TCC | 00 | N/A | 3 | 33% | 1 | 100% |
| Cyber Crime Specialist | CCR1 | TCC | 3 | 33% | 1 | 0% | 2 | 50% |
| A. S. - Criminal Justice | CJA3 | Degree | 0 | N/A | 0 | N/A | 10 | 80% |
| Criminal Justice Technology | CJT2 | Diploma | 10 | 50% | 10 | 40% | 8 | 88% |
| Criminal Justice Technology | CJT3 | Degree | 22 | 68% | 8 | 100% | 5 | 100% |
| Construction Management | CM12 | Diploma | 3 | 100% | 2 | 50% | 7 | 86% |
| Construction Management | CM13 | Degree | 11 | 73% | 8 | 100% | 13 | 100% |
| Cisco Network Specialist | CN71 | TCC | 0 | N/A | 0 | N/A | 2 | 0% |
| Cosmetology | CO12 | Diploma | 25 | 80% | 23 | 83% | 14 | 64% |
| Photography | CP13 | Degree | 8 | 75% | 5 | 40% | 22 | 55% |
| Photography | CP14 | Diploma | 10 | 60% | 8 | 63% | 8 | 63% |
| Computer Programming | CP23 | Degree | 43 | 70% | 56 | 68% | 70 | 73% |
| Computer Programming | CP24 | Diploma | 14 | 64% | 18 | 67% | 16 | 56% |
| Clinical Research Professional | CR31 | TCC | 6 | 83% | 0 | N/A | 4 | 100% |
| Game Development | CSD3 | Degree | 27 | 67% | 29 | 62% | 28 | 68% |
| Game Development | CSD4 | Diploma | 10 | 70% | 9 | 67% | 14 | 79% |
| Cardiovascular Technology | CT13 | Degree | 1 | 100% | 1 | 100% | 0 | N/A |
| Computed Tomography Specialist | CT91 | TCC | 3 | 100% | 0 | N/A | 0 | N/A |

Retention Statistics
Retention Rates by Program, Cont.
Reporting Years 2017 - 2019

| Program | Major Code | Award Level | 2017 | | Reporting Year 2018 | | 2019 | |
|----------------------------------------------|------------|-------------|--------|------|---------------------|------|--------|------|
| | | | Cohort | Rate | Cohort | Rate | Cohort | Rate |
| Dental Assisting | DA12 | Diploma | 0 | N/A | 0 | N/A | 1 | 100% |
| Data Center Specialist | DC11 | TCC | 1 | 100% | 2 | 50% | 0 | N/A |
| Digital Imaging Specialist | DIA1 | TCC | 1 | 100% | 1 | 100% | 0 | N/A |
| Diagnostic Medical Sonography | DMS3 | Degree | 2 | 50% | 2 | 100% | 0 | N/A |
| Drafting Technology | DT12 | Diploma | 3 | 67% | 5 | 100% | 6 | 83% |
| Drafting Technology | DT13 | Degree | 11 | 82% | 14 | 93% | 17 | 76% |
| Emergency Medical Responder (EMR) | EB71 | TCC | 1 | 100% | 0 | N/A | 0 | N/A |
| Early Childhood Care/Education | EC13 | Degree | 21 | 81% | 19 | 74% | 14 | 79% |
| Echocardiography | EC23 | Degree | 2 | 100% | 0 | N/A | 1 | 0% |
| Early Childhood Care/Education | ECC2 | Diploma | 5 | 80% | 14 | 57% | 13 | 54% |
| Early Childhood Program Administration | ECP1 | TCC | 1 | 100% | 0 | N/A | 0 | N/A |
| Horticulture | EH12 | Diploma | 5 | 60% | 3 | 67% | 2 | 100% |
| Horticulture | EH13 | Degree | 8 | 75% | 3 | 67% | 9 | 78% |
| EMS Professions | EP12 | Diploma | 4 | 100% | 3 | 100% | 10 | 100% |
| Engineering Technology | ET33 | Degree | 27 | 70% | 30 | 67% | 43 | 65% |
| Family Child Care Practitioner | FC11 | TCC | 1 | 100% | 0 | N/A | 0 | N/A |
| HIT Certificate Program | FNT1 | TCC | 3 | 33% | 8 | 75% | 4 | 50% |
| Graphic Design for the Web | GDF1 | TCC | 0 | N/A | 0 | N/A | 2 | 0% |
| Georgia Film Academy On-Set Production Asst. | GF21 | TCC | 0 | N/A | 53 | 74% | 42 | 69% |
| Gas Metal Arc Welder | GM31 | TCC | 0 | N/A | 1 | 100% | 0 | N/A |
| Health Care Assistant | HA21 | TCC | 78 | 58% | 84 | 68% | 74 | 73% |
| Heavy Diesel Service Technician | HD31 | TCC | 12 | 92% | 10 | 90% | 14 | 86% |
| Hotel/Restaurant/Tourism Management | HM12 | Diploma | 9 | 67% | 7 | 57% | 7 | 71% |
| Hotel/Restaurant/Tourism Management | HM13 | Degree | 9 | 89% | 12 | 50% | 10 | 70% |
| Human Resource Management Specialist | HRM1 | TCC | 3 | 0% | 3 | 67% | 2 | 50% |
| Health Care Science | HS21 | TCC | 517 | 66% | 530 | 62% | 631 | 70% |
| Interior Design Assistant | ID11 | TCC | 1 | 100% | 2 | 100% | 1 | 100% |
| Interior Design and Color Consultant | ID21 | TCC | 0 | N/A | 0 | N/A | 2 | 50% |
| Interiors | IN12 | Diploma | 2 | 50% | 7 | 57% | 3 | 67% |
| Interiors | IN13 | Degree | 12 | 67% | 15 | 80% | 14 | 86% |
| Cybersecurity | IS12 | Diploma | 8 | 50% | 21 | 67% | 25 | 76% |
| Cybersecurity | IS23 | Degree | 23 | 70% | 26 | 85% | 70 | 76% |
| Web Site Design/Development | IS53 | Degree | 9 | 78% | 14 | 57% | 19 | 84% |
| Web Site Design/Development | IS64 | Diploma | 5 | 40% | 8 | 63% | 12 | 92% |
| Cybersecurity | IS81 | TCC | 0 | N/A | 1 | 0% | 1 | 100% |
| Web Site Developer | ISE1 | TCC | 0 | N/A | 0 | N/A | 1 | 0% |
| Java Programmer | JP11 | TCC | 0 | N/A | 1 | 0% | 1 | 0% |
| Kitchen and Bath Designer | KAB1 | TCC | 0 | N/A | 0 | N/A | 1 | 0% |
| Landscape Design Technician | LDT1 | TCC | 0 | N/A | 1 | 0% | 0 | N/A |
| Logistics Management Specialist | LM21 | TCC | 0 | N/A | 2 | 50% | 0 | N/A |
| Medical Assisting | MA22 | Diploma | 0 | N/A | 1 | 100% | 0 | N/A |

Retention Statistics
Retention Rates by Program, Cont.
Reporting Years 2017 - 2019

| Program | Major Code | Award Level | 2017 | | Reporting Year 2018 | | 2019 | |
|--------------------------------------------|------------|-------------|--------|------|---------------------|------|--------|------|
| | | | Cohort | Rate | Cohort | Rate | Cohort | Rate |
| Medical Billing Clerk | MB21 | TCC | 8 | 88% | 1 | 100% | 6 | 100% |
| Mercedes Benz College Program | MBC3 | Degree | N/O | N/A | 0 | N/A | 14 | 93% |
| Mopar CAP Diploma | MCD2 | Diploma | 0 | N/A | 1 | 100% | 0 | N/A |
| Business Management | MD12 | Diploma | 14 | 50% | 22 | 45% | 29 | 69% |
| Business Management | MD13 | Degree | 47 | 60% | 71 | 68% | 66 | 55% |
| Medical Front Office Assistant | MF21 | TCC | 2 | 0% | 1 | 0% | 0 | N/A |
| Microsoft Office Applications Professional | MF41 | TCC | 00 | N/A | 2 | 50% | 0 | N/A |
| Marketing Management | MM12 | Diploma | 7 | 71% | 10 | 90% | 7 | 43% |
| Marketing Management | MM13 | Degree | 19 | 47% | 12 | 58% | 31 | 68% |
| Magnetic Resonance Imaging Specialist | MRI1 | TCC | 2 | 100% | 5 | 100% | 0 | N/A |
| Network Administrator | NA21 | TCC | 1 | 0% | 0 | N/A | 1 | 100% |
| Nursing Bridge Option | NBO3 | Degree | 6 | 100% | 1 | 100% | 1 | 100% |
| Networking Specialist | NS13 | Degree | 22 | 86% | 24 | 71% | 22 | 73% |
| Networking Specialist | NS14 | Diploma | 17 | 59% | 19 | 79% | 20 | 85% |
| Nursing | NU13 | Degree | 1 | 100% | 1 | 100% | 2 | 100% |
| Payroll Accounting Specialist | PA61 | TCC | 3 | 67% | 2 | 100% | 2 | 100% |
| Patient Care Assistant | PC21 | TCC | 5 | 60% | 2 | 50% | 8 | 63% |
| Photography | PH12 | Diploma | 0 | N/A | 0 | N/A | 1 | 100% |
| Photography | PH13 | Degree | 0 | N/A | 0 | N/A | 2 | 100% |
| PC Repair and Network Technician | PR21 | TCC | 10 | 80% | 32 | 72% | 4 | 100% |
| Sports Management | RM21 | TCC | 0 | N/A | 0 | N/A | 1 | 0% |
| Refrigeration System Service Technician | RS21 | TCC | 1 | 100% | 0 | N/A | 0 | N/A |
| Radiologic Technology | RT23 | Degree | 3 | 100% | 4 | 75% | 1 | 100% |
| Event Coordinator | SES1 | TCC | 0 | N/A | 1 | 0% | 0 | N/A |
| Social Media Marketing | SM11 | TCC | 0 | N/A | 0 | N/A | 1 | 100% |
| Surgical Technology | ST13 | Degree | 0 | N/A | 3 | 100% | 1 | 0% |
| Sustainable Urban Agriculture Technician | SUA1 | TCC | 0 | N/A | 0 | N/A | 2 | 50% |
| Technical Specialist | TC31 | TCC | 9 | 67% | 3 | 67% | 0 | N/A |
| Veterinary Technology | VT23 | Degree | 4 | 100% | 6 | 100% | 7 | 100% |
| Welding and Joining Technology | WAJ2 | Diploma | 36 | 64% | 33 | 79% | 33 | 85% |

Source: KMS #TEC0200

N/O: Not Offered

Graduation and Placement Statistics

Annual Graduation Rates and Trends

(Percent Change, Year-to-Year)

Annual Number of Awards Conferred Trends

(Percent Change, Year-to-Year)

Degree Graduates by Program Area

Annual Placement Rates and Trends

(Percent Change, Year-to-Year)

Annual Placement Rates by Program

Program Certification and Licensure Pass Rates

Graduation Statistics
Annual Graduation Rate and Trends (Percent Change, Year-to-Year)
AY2017 - AY2019

| | 2017 | 2018 | % Change | 2019 | % Change |
|------------------------------|--------------|--------------|--------------|--------------|--------------|
| Unduplicated Graduates** | 3,867 | 3,616 | -6.5% | 3,643 | 0.7% |
| Non-Graduate Leavers*** | 1,200 | 1,382 | 15.2% | 1,513 | 9.5% |
| Graduates + Non-Grad Leavers | 5,067 | 4,998 | -1.4% | 5,156 | 3.2% |
| Graduation Rate* | 76.3% | 72.3% | -4.0% | 70.7% | -1.7% |

Source : KMS #TEC3111

*Graduation Rates = Graduates / (Graduates + Non-Graduate Leavers)

**All enrolled in an award program (TCC, Diploma, or Degree) and in at least one vocational course who left the College as a graduate or leaver (all leavers) during a 2-year period (the year shown and the previous year).

***Non-graduate leavers are students enrolled in the Fall semester in a program of study (major not ending in 00); not a special admit or transient student; did not graduate from that major during the academic year; and were not enrolled in that major in Spring and Summer semesters of the reporting year.

Graduation Statistics
Annual Number of Awards Conferred and Trends (Percent Change, Year-to-Year)
AY2017 - AY2019

| Award Level | 2017 | 2018 | % Change | 2019 | % Change |
|--------------------|--------------|--------------|-------------|--------------|-------------|
| Degree | 629 | 634 | 0.8% | 757 | 19.4% |
| Diploma | 427 | 601 | 40.7% | 635 | 5.7% |
| TCC | 2,345 | 2,421 | 3.2% | 2,616 | 8.1% |
| Grand Total | 3,401 | 3,656 | 7.5% | 4,008 | 9.6% |

Source : KMS #TEC0109

Note: Awards conferred counts are duplicated as students can earn multiple credentials within or between terms in the same academic year.

Graduation Statistics
Degree Graduates by Program Area
AY2017 – AY2019

| Programs | AY2017 | AY2018 | % Percent | AY2019 | % Percent |
|--------------------------------------------------|---------------|---------------|------------------|---------------|------------------|
| AAS in Interdisciplinary Studies | N/O | 0 | N/A | 5 | N/A |
| Accounting | 43 | 32 | -25.6% | 50 | 56.3% |
| Air Conditioning Technology | 15 | 25 | 66.7% | 24 | -4.0% |
| Associate Degree Nursing Paramedic Bridge Option | 4 | 4 | 0.0% | 4 | 0.0% |
| Automotive Technology | 17 | 23 | 35.3% | 38 | 65.2% |
| Bioscience Technology | 10 | 6 | -40.0% | 10 | 66.7% |
| Business Management | 25 | 40 | 60.0% | 39 | -2.5% |
| Business Technology | 29 | 30 | 3.4% | 24 | -20.0% |
| Cardiovascular Technology | 7 | 7 | 0.0% | 10 | 42.9% |
| Chrysler CAP | 3 | 5 | 66.7% | 4 | -20.0% |
| Commercial Construction Management | 10 | 12 | 20.0% | 9 | -25.0% |
| Computer Programming | 38 | 37 | -2.6% | 43 | 16.2% |
| Construction Management | 6 | 4 | -33.3% | 20 | 400.0% |
| Criminal Justice Technology | 27 | 33 | 22.2% | 18 | -45.5% |
| Culinary Arts | 10 | 5 | -50.0% | 13 | 160.0% |
| Cybersecurity | 32 | 47 | 46.9% | 61 | 29.8% |
| Diagnostic Medical Sonography | 10 | 13 | 30.0% | 12 | -7.7% |
| Drafting Technology | 10 | 7 | -30.0% | 13 | 85.7% |
| Early Childhood Care/Education | 31 | 28 | -9.7% | 22 | -21.4% |
| Echocardiography | 8 | 8 | 0.0% | 6 | -25.0% |
| Engineering Technology | 14 | 4 | -71.4% | 6 | 50.0% |
| Game Development | 4 | 9 | 125.0% | 12 | 33.3% |
| Health Information Management Technology | 7 | 9 | 28.6% | 14 | 55.6% |
| Horticulture | 12 | 5 | -58.3% | 12 | 140.0% |
| Hotel/Restaurant/Tourism Management | 13 | 9 | -30.8% | 19 | 111.1% |
| Interiors | 13 | 8 | -38.5% | 7 | -12.5% |
| Marketing Management | 11 | 17 | 54.5% | 14 | -17.6% |
| Mercedes Benz College Program | N/O | 0 | N/A | 9 | N/A |
| Networking Specialist | 44 | 54 | 22.7% | 55 | 1.9% |
| Nursing | 47 | 38 | -19.1% | 55 | 44.7% |
| Nursing Bridge Option | 9 | 5 | -44.4% | 8 | 60.0% |
| Paramedicine | 9 | 7 | -22.2% | 5 | -28.6% |
| Photography | 14 | 12 | -14.3% | 18 | 50.0% |
| Radiologic Technology | 26 | 18 | -30.8% | 26 | 44.4% |
| Respiratory Care | 15 | 16 | 6.7% | 13 | -18.8% |
| Surgical Technology | 30 | 26 | -13.3% | 26 | 0.0% |
| Veterinary Technology | 13 | 13 | 0.0% | 20 | 53.8% |
| Web Site Design/Development | 13 | 18 | 38.5% | 13 | -27.8% |
| Grand Total | 629 | 634 | 0.8% | 757 | 19.4% |

Source: KMS # TEC0109

N/O: Not Offered

Placement Statistics
Annual Placement Rates and Trends (Percent Change, Year-to-Year)
Reporting Years 2017 - AY2019

| Placement Rate Type | 2017 | 2018 | % Change | 2019 | % Change |
|---------------------|-------|-------|----------|-------|----------|
| In-Field | 86.1% | 85.4% | -0.7% | 82.7% | -2.7% |
| Overall | 99.6% | 99.9% | 0.3% | 99.4% | -0.5% |

Source: KMS #TEC0108

Note: Reporting year's rates are based on previous year's graduates.

Placement Statistics
Annual Placement Rates by Program (Overall and In-Field)
Reporting Years 2017 - AY2019

| Program | Major Code | Award Level | Overall Placement | | | In-Field Placement | | |
|---------------------------------------------------|------------|-------------|-------------------|------|------|--------------------|------|------|
| | | | 2017 | 2018 | 2019 | 2017 | 2018 | 2019 |
| Accounting | AC12 | Diploma | 100% | 100% | 100% | 98% | 88% | 89% |
| Accounting | AC13 | Degree | 100% | 100% | 100% | 100% | 88% | 82% |
| Administrative Support Assistant | AS21 | TCC | 98% | 100% | 98% | 94% | 89% | 88% |
| Advanced CAD Technician | AC51 | TCC | 100% | 100% | 100% | 83% | 94% | 64% |
| Advanced Dental Assisting | AD21 | TCC | 100% | 100% | 100% | 85% | 81% | 43% |
| Advanced Emergency Medical Technician (AEMT) | EMH1 | TCC | 100% | 100% | 100% | 93% | 94% | 88% |
| Advanced Shielded Metal Arc Welder | OSM1 | TCC | 100% | 100% | 100% | 87% | 86% | 89% |
| Air Conditioning Electrical Technician | ACK1 | TCC | 100% | 100% | 100% | 98% | 91% | 96% |
| Air Conditioning System Maintenance Technician | AZ21 | TCC | 100% | 100% | 100% | 98% | 88% | 97% |
| Air Conditioning Technology | ACT2 | Diploma | 100% | 100% | 100% | 95% | 92% | 84% |
| Air Conditioning Technology | ACT3 | Degree | 100% | 100% | 100% | 96% | 86% | 77% |
| Associate Degree Nursing Paramedic Bridge Option | AD33 | Degree | 100% | 100% | 100% | 100% | 100% | 100% |
| Auto Electrical/Electronic Systems Technician | AE41 | TCC | 100% | 100% | 100% | 97% | 89% | 95% |
| Automotive Chassis Technician Specialist | ASG1 | TCC | 100% | 100% | 98% | 96% | 90% | 96% |
| Automotive Climate Control Technician | AH21 | TCC | 100% | 100% | 96% | 96% | 92% | 95% |
| Automotive Engine Performance Technician | AE51 | TCC | 100% | 100% | 98% | 98% | 90% | 98% |
| Automotive Engine Repair Technician | AE61 | TCC | 100% | 100% | 96% | 96% | 93% | 93% |
| Automotive Fundamentals | AF12 | Diploma | 100% | 100% | 100% | 82% | 100% | 100% |
| Automotive Technology | AT14 | Diploma | N/A | N/A | 100% | N/A | N/A | 100% |
| Automotive Technology | AT23 | Degree | 100% | 100% | 100% | 100% | 87% | 89% |
| Automotive Transmission/Transaxle Tech Specialist | AA71 | TCC | 100% | 100% | 97% | 96% | 94% | 97% |
| Baking and Pastry Specialist | BA51 | TCC | N/A | 100% | 100% | N/A | 90% | 100% |
| Barbering | BA12 | Diploma | 100% | 100% | 100% | 100% | 0% | 100% |
| Basic Dental Assisting | BDA1 | TCC | 100% | 100% | 100% | 85% | 89% | 43% |
| Bioscience Environmental Laboratory Technologist | BED1 | TCC | 75% | N/A | 100% | 0% | N/A | 0% |
| Bioscience Regulatory Assurance Technologist | BR21 | TCC | 83% | 100% | 80% | 67% | 43% | 0% |
| Bioscience Technology | BT13 | Degree | 88% | 100% | 100% | 54% | 40% | 20% |
| Building and Facilities Maintenance | BM22 | Diploma | 100% | N/A | 100% | 100% | N/A | 100% |

Placement Statistics
Annual Placement Rates by Program (Overall and In-Field), Cont.
Reporting Years 2017 - AY2019

| Program | Major Code | Award Level | Overall Placement | | | In-Field Placement | | |
|------------------------------------------------|------------|-------------|-------------------|------|------|--------------------|------|------|
| | | | 2017 | 2018 | 2019 | 2017 | 2018 | 2019 |
| Business Management | MD12 | Diploma | 100% | 100% | 100% | 90% | 96% | 73% |
| Business Management | MD13 | Degree | 100% | 100% | 100% | 90% | 96% | 83% |
| Business Technology | BA22 | Diploma | 98% | 100% | 100% | 90% | 89% | 92% |
| Business Technology | BA23 | Degree | 100% | 100% | 100% | 93% | 83% | 93% |
| CAD Operator | CP41 | TCC | 100% | 100% | 100% | 100% | 67% | 100% |
| Cardiovascular Technology | CT13 | Degree | 100% | 100% | 100% | 100% | 100% | 71% |
| Carpentry | CA22 | Diploma | 75% | 100% | 100% | 50% | 100% | 92% |
| Central Processing Technician | CF71 | TCC | N/A | 100% | 100% | N/A | 77% | 18% |
| Certified Construction Worker | CCW1 | TCC | 100% | 100% | 100% | 87% | 100% | 96% |
| Child Development Specialist | CD61 | TCC | 100% | 100% | 100% | 89% | 85% | 83% |
| Chrysler CAP | CC23 | Degree | 100% | 100% | 100% | 100% | 100% | 100% |
| Cisco Network Specialist | CN71 | TCC | 100% | 100% | 100% | 97% | 81% | 100% |
| Clinical Research Professional | CR31 | TCC | 100% | N/A | 100% | 67% | N/A | 100% |
| Commercial Construction Contract Administrator | CCL1 | TCC | 100% | 100% | 100% | 100% | 86% | 91% |
| Commercial Construction Estimator | CCK1 | TCC | 100% | 100% | 100% | 100% | 88% | 100% |
| Commercial Construction Management | CC13 | Degree | 100% | 100% | 100% | 100% | 90% | 90% |
| Computed Tomography Specialist | CT91 | TCC | 100% | 100% | N/A | 100% | 100% | N/A |
| Computer Programming | CP23 | Degree | 100% | 100% | 100% | 89% | 79% | 90% |
| Computer Programming | CP24 | Diploma | 100% | 100% | 100% | 83% | 86% | 83% |
| Computerized Accounting Specialist | CAY1 | TCC | 100% | 100% | 98% | 95% | 86% | 82% |
| Construction Management | CM12 | Diploma | N/A | 100% | 100% | N/A | 33% | 100% |
| Construction Management | CM13 | Degree | 100% | 100% | 100% | 89% | 83% | 100% |
| Construction Manager | CM81 | TCC | 100% | 100% | 100% | 86% | 78% | 100% |
| Cosmetology | CO12 | Diploma | 100% | 100% | 100% | 62% | 61% | 67% |
| Criminal Justice Technology | CJT2 | Diploma | 100% | 100% | 100% | 59% | 64% | 57% |
| Criminal Justice Technology | CJT3 | Degree | 100% | 100% | 100% | 52% | 67% | 54% |
| Culinary Arts | CA43 | Degree | 100% | 100% | 100% | 100% | 90% | 100% |
| Culinary Arts | CA44 | Diploma | 100% | 100% | 100% | 100% | 100% | 100% |
| Cyber Crime Specialist | CCR1 | TCC | 100% | 100% | 100% | 100% | 80% | 78% |
| Cybersecurity | IS12 | Diploma | 100% | 100% | 100% | 90% | 75% | 71% |
| Cybersecurity | IS23 | Degree | 100% | 100% | 100% | 95% | 88% | 75% |
| Cybersecurity | IS81 | Diploma | 100% | 100% | 100% | 94% | 83% | 79% |
| Data Center Specialist | DC11 | TCC | 100% | 100% | 100% | 81% | 81% | 88% |
| Dental Assisting | DA12 | Diploma | 100% | 100% | 100% | 85% | 81% | 43% |
| Diagnostic Medical Sonography | DMS3 | Degree | 100% | 100% | 100% | 100% | 100% | 100% |
| Digital Imaging Specialist | DIA1 | TCC | 100% | 100% | 86% | 93% | 89% | 32% |
| Drafters Assistant | DA31 | TCC | 100% | 100% | 100% | 100% | 89% | 100% |
| Drafting Technology | DT12 | Diploma | N/A | 100% | 100% | N/A | 100% | 50% |
| Drafting Technology | DT13 | Degree | 100% | 100% | 100% | 90% | 100% | 67% |
| Early Childhood Care and Education Basics | EC31 | TCC | 100% | 100% | 100% | 91% | 91% | 95% |

Placement Statistics
Annual Placement Rates by Program (Overall and In-Field), Cont.
Reporting Years 2017 - AY2019

| Program | Major Code | Award Level | Overall Placement | | | In-Field Placement | | |
|--------------------------------------------------|------------|-------------|-------------------|------|------|--------------------|------|------|
| | | | 2017 | 2018 | 2019 | 2017 | 2018 | 2019 |
| Early Childhood Care/Education | EC13 | Degree | 100% | 100% | 100% | 83% | 93% | 89% |
| Early Childhood Care/Education | ECC2 | Diploma | 97% | 100% | 100% | 82% | 90% | 93% |
| Early Childhood Exceptionalities | EC41 | TCC | 100% | 100% | 100% | 82% | 100% | 92% |
| Early Childhood Program Administration | ECP1 | TCC | 100% | 100% | 100% | 88% | 100% | 60% |
| Echocardiography | EC23 | Degree | N/A | 100% | 100% | N/A | 86% | 50% |
| Emergency Medical Responder (EMR) | EB71 | TCC | 100% | 100% | 100% | N/A | 0% | 100% |
| Emergency Medical Technician (EMT) | EMJ1 | TCC | 100% | 100% | 98% | 94% | 79% | 93% |
| EMS Professions | EP12 | Diploma | 100% | 100% | 100% | 93% | 94% | 88% |
| Engineering Technology | ET33 | Degree | N/A | 100% | 100% | N/A | 57% | 25% |
| Entrepreneurship | EN11 | TCC | 100% | 100% | 100% | 100% | 93% | 100% |
| Event Coordinator | SES1 | TCC | 100% | 100% | 100% | 92% | 100% | 86% |
| Finish Carpenter | FC31 | TCC | 100% | 100% | 100% | 80% | 100% | 100% |
| Floral Designer | FD11 | TCC | 100% | 100% | 100% | 67% | 100% | 75% |
| Flux Cored Arc Welder | FC61 | TCC | 100% | 100% | 93% | 92% | 92% | 83% |
| Food and Beverage Director | FAB1 | TCC | 100% | 100% | 100% | 100% | 100% | 100% |
| Framing Carpenter | FC71 | TCC | 100% | 100% | 100% | 75% | 100% | 100% |
| Game Developer | CSZ1 | TCC | 100% | 100% | 100% | 50% | 67% | 100% |
| Game Development | CSD3 | Degree | 100% | 100% | 100% | 50% | 75% | 100% |
| Game Development | CSD4 | Diploma | 100% | N/A | 100% | 50% | N/A | 100% |
| Gas Metal Arc Welder | GM31 | TCC | 100% | 100% | 96% | 88% | 85% | 96% |
| Gas Tungsten Arc Welder | GTA1 | TCC | 100% | 100% | 97% | 91% | 88% | 93% |
| Georgia Film Academy On-Set Production Assistant | GF21 | TCC | 100% | 100% | 100% | 91% | 95% | 86% |
| Graphic Design for the Web | GDF1 | TCC | N/A | N/A | 100% | N/A | N/A | 100% |
| Health Care Assistant | HA21 | TCC | 98% | 100% | 98% | 80% | 78% | 49% |
| Health Care Science | HS21 | TCC | 100% | 100% | 99% | 61% | 67% | 72% |
| Health Information Management Technology | HI13 | Degree | 79% | 100% | 100% | 46% | 100% | 67% |
| Heavy Diesel Service Technician | HD31 | TCC | 100% | 100% | 100% | 100% | 94% | 100% |
| HIT Certificate Program | FNT1 | TCC | 100% | 88% | 100% | 82% | 50% | 0% |
| Horticulture | EH12 | Diploma | 100% | 100% | 100% | 100% | 67% | 100% |
| Horticulture | EH13 | Degree | 100% | 100% | 100% | 83% | 92% | 80% |
| Hotel Management Specialist | HM21 | TCC | 100% | 100% | 100% | 92% | 100% | 92% |
| Hotel/Restaurant/Tourism Management | HM12 | Diploma | 100% | 100% | 100% | 100% | 80% | 100% |
| Hotel/Restaurant/Tourism Management | HM13 | Degree | 100% | 100% | 100% | 87% | 83% | 89% |
| Human Resource Management Specialist | HRM1 | TCC | 100% | 100% | 100% | 100% | 94% | 74% |
| Interior Design and Color Consultant | ID21 | TCC | 100% | 100% | 100% | 95% | 91% | 89% |
| Interior Design Assistant | ID11 | TCC | 100% | 100% | 100% | 100% | 91% | 100% |
| Interior Design Sales Consultant | ID31 | TCC | 100% | 100% | 100% | 94% | 90% | 89% |
| Interiors | IN12 | Diploma | 100% | 91% | 100% | 83% | 91% | 100% |
| Interiors | IN13 | Degree | 100% | 100% | 100% | 75% | 100% | 100% |
| Interiors Technology Certificate | IT31 | TCC | 100% | 100% | 100% | 100% | 100% | 100% |

Placement Statistics
Annual Placement Rates by Program (Overall and In-Field), Cont.
Reporting Years 2017 - AY2019

| Program | Major Code | Award Level | Overall Placement | | | In-Field Placement | | |
|---------------------------------------------------|------------|-------------|-------------------|------|------|--------------------|------|------|
| | | | 2017 | 2018 | 2019 | 2017 | 2018 | 2019 |
| Java Programmer | JP11 | TCC | 100% | 100% | 100% | 86% | 75% | 92% |
| Kitchen and Bath Designer | KAB1 | TCC | N/A | 100% | N/A | N/A | 100% | N/A |
| Landscape Design Technician | LDT1 | TCC | 100% | N/A | N/A | 100% | N/A | N/A |
| Landscape Installation Technician | HI11 | TCC | 100% | N/A | 100% | 100% | N/A | 100% |
| Linux/UNIX System Administrator | LA31 | TCC | 100% | 100% | 100% | 100% | 57% | 88% |
| Logistics Management Specialist | LM21 | TCC | 100% | 100% | 100% | 100% | 100% | 89% |
| Magnetic Resonance Imaging Specialist | MRI1 | TCC | 100% | 100% | N/A | 100% | 100% | N/A |
| Management and Leadership Specialist | MAL1 | TCC | 100% | 100% | 100% | 100% | 94% | 74% |
| Marketing Management | MM12 | Diploma | 100% | 100% | 100% | 96% | 93% | 88% |
| Marketing Management | MM13 | Degree | 100% | 100% | 100% | 95% | 100% | 93% |
| Marketing Specialist | MS21 | TCC | 100% | 100% | 100% | 96% | 100% | 72% |
| Medical Assisting | MA22 | Diploma | 100% | 100% | 100% | 100% | 100% | 83% |
| Medical Billing Clerk | MB21 | TCC | 100% | 100% | 100% | 75% | 83% | 88% |
| Medical Front Office Assistant | MF21 | TCC | 100% | 100% | 100% | 79% | 65% | 86% |
| Microsoft Office Applications Professional | MF41 | TCC | 100% | 100% | 98% | 95% | 83% | 86% |
| Mopar CAP Diploma | MCD2 | Diploma | N/A | N/A | 100% | N/A | N/A | 100% |
| Mopar CAP Electrical Certificate | MC21 | TCC | 100% | 100% | 100% | 100% | 100% | 90% |
| Mopar CAP Engine Performance Certificate | MC31 | TCC | 100% | 100% | 100% | 100% | 100% | 100% |
| Network Administrator | NA21 | TCC | 100% | 100% | 100% | 90% | 77% | 85% |
| Networking Specialist | NS13 | Degree | 100% | 100% | 100% | 94% | 88% | 82% |
| Networking Specialist | NS14 | Diploma | 100% | 100% | 100% | 86% | 83% | 79% |
| Nursing | NU13 | Degree | 100% | 100% | 100% | 100% | 96% | 92% |
| Nursing Bridge Option | NBO3 | Degree | 100% | 100% | 100% | 100% | 100% | 100% |
| Office Accounting Specialist | OA31 | TCC | 100% | 100% | 98% | 94% | 89% | 76% |
| Paramedicine | PT12 | Diploma | 100% | 100% | 90% | 100% | 100% | 90% |
| Paramedicine | PT13 | Degree | N/A | 100% | 100% | N/A | 100% | 86% |
| Patient Care Assistant | PC21 | TCC | 100% | 100% | 100% | 50% | 75% | 38% |
| Payroll Accounting Specialist | PA61 | TCC | 100% | 100% | 100% | 91% | 89% | 86% |
| PC Repair and Network Technician | PR21 | TCC | 100% | 100% | 100% | 98% | 88% | 91% |
| Photography | CP13 | Degree | 100% | 100% | 100% | 86% | 92% | 83% |
| Photography | CP14 | Diploma | 100% | 100% | 100% | 100% | 100% | 67% |
| Photography | PH12 | Diploma | N/A | N/A | 100% | N/A | N/A | 50% |
| Photography | PH13 | Degree | N/A | N/A | 100% | N/A | N/A | 50% |
| Photography Portrait Specialist | PP11 | TCC | N/A | N/A | 100% | N/A | N/A | 67% |
| Photovoltaic Systems Installation and Repair Tech | PS11 | TCC | 100% | 100% | 100% | 90% | 100% | 86% |
| Prep Cook | PC51 | TCC | 100% | 100% | 100% | 100% | 95% | 100% |
| Radiologic Technology | RT23 | Degree | 100% | 100% | 100% | 100% | 100% | 100% |
| Refrigeration System Service Technician | RS21 | TCC | 100% | 100% | 100% | 98% | 88% | 97% |
| Respiratory Care | RCT3 | Degree | 100% | 100% | 100% | 100% | 100% | 100% |
| Small Business Marketing Manager | SB51 | TCC | 100% | 100% | 100% | 100% | 93% | 100% |

Placement Statistics
Annual Placement Rates by Program (Overall and In-Field), Cont.
Reporting Years 2017 - AY2019

| Program | Major Code | Award Level | Overall Placement | | | In-Field Placement | | |
|------------------------------------------|------------|-------------|-------------------|------|------|--------------------|------|------|
| | | | 2017 | 2018 | 2019 | 2017 | 2018 | 2019 |
| Social Media Marketing | SM11 | TCC | N/A | N/A | 100% | N/A | N/A | 100% |
| Sports Management | RM21 | TCC | 100% | N/A | 100% | 67% | N/A | 100% |
| Surgical Technology | ST13 | Degree | 100% | 97% | 100% | 100% | 93% | 58% |
| Sustainable Urban Agriculture Technician | SUA1 | TCC | 100% | 100% | 100% | 100% | 86% | 83% |
| Tax Preparation Specialist | TPS1 | TCC | 100% | 100% | 100% | 98% | 86% | 91% |
| Technical Specialist | TC31 | TCC | 100% | 100% | 100% | 100% | 100% | 80% |
| Toyota T-TEN | AST3 | Degree | 100% | N/A | N/A | 100% | N/A | N/A |
| Travel Agency Operations | TAO1 | TCC | 100% | 100% | 100% | 90% | 95% | 100% |
| Veterinary Technician Assistant | VA11 | TCC | 100% | 100% | 100% | 78% | 86% | 93% |
| Veterinary Technology | VT23 | Degree | 100% | 100% | 100% | 100% | 92% | 100% |
| Web Site Design/Development | IS53 | Degree | 100% | 100% | 100% | 82% | 77% | 80% |
| Web Site Design/Development | IS64 | Diploma | 100% | 100% | 100% | 100% | 60% | 92% |
| Web Site Developer | ISE1 | TCC | 100% | 100% | 100% | 85% | 69% | 87% |
| Welding and Joining Technology | WAJ2 | Diploma | 100% | 100% | 100% | 87% | 93% | 90% |

Source: KMS #TEC0145

NOTE: Placement rates are based on unduplicated graduates and unduplicated employment status using the latest employment status entry for each student. Rates are also based on prior year's graduates (e.g., AY2018 total placement rate is based on AY2017 graduates). Therefore, annual rates noted as 'N/A' means that the program did not have any previous year's graduates to track.

Graduation Statistics
Program Certification and Licensure Pass Rates
AY2017 - AY2019

| Division/Program | Award | Certification or Licensing Exam | 2017 | 2018 | 2019 |
|-----------------------------------------|---------|--------------------------------------------------------------------|------|------|------|
| Public and Professional Services | | | | | |
| Barbering | Diploma | Georgia State Board of Barbering - Barbering Board Examination | * | 100% | ** |
| Cosmetology | Diploma | Georgia State Board of Cosmetology - Cosmetology Board Examination | 77% | 82% | ** |
| Health Sciences Division | | | | | |
| Cardiovascular Technology - CAVT | AAS | Cardiovascular Credentialing International - RCIS Invasive CAVT | 100% | 100% | 100% |
| Cardiovascular Technology - ECHO | AAS | Cardiovascular Credentialing International - RDCS ECHO | 100% | 100% | 100% |
| Diagnostic Medical Sonography - AB | AAS | American Registry for Diagnostic Medical Sonography - AB | 100% | 100% | 100% |

Graduation Statistics
Program Certification and Licensure Pass Rates, Cont.
AY2017 - AY2019

| Division/Program | Award | Certification or Licensing Exam | 2017 | 2018 | 2019 |
|-----------------------------------------|-------------|----------------------------------------------------------------------------------------------------------------------|------|------|------|
| Health Sciences Division, Cont. | | | | | |
| Diagnostic Medical Sonography - OB/GYN | AAS | American Registry for Diagnostic Medical Sonography - OB/GYN | 100% | 100% | 100% |
| Health Information Technology | AAS | Commission on Certification for Health Informatics and Information Management - RHIT Exam | 80% | 80% | ** |
| Radiologic Technology | AAS | American Registry of Radiologic Technologist - National Certification Exam for Radiographers | 100% | 100% | 100% |
| Computed Tomography Clinical Specialist | TCC | American Registry of Radiologic Technologist - Post-Primary Computed Tomography Exam | 100% | * | * |
| MRI Specialist | TCC | American Registry of Radiologic Technologist - Post-Primary Magnetic Resonance Imaging Exam | 100% | * | * |
| Dental Assisting | Diploma | Georgia Dental Association - Expanded Duties | 100% | 100% | 100% |
| Emergency Service Education - EMT | TCC | National Registry of Emergency Medical Technicians - Emergency Medical Technician Exam | 74% | 89% | ** |
| Emergency Service Education - AEMT | TCC | National Registry of Emergency Medical Technicians - Advanced Emergency Medical Technician Exam | 56% | 59% | ** |
| Paramedicine | AAS/Diploma | National Registry of Emergency Medical Technicians - Paramedic Certification Exam & Paramedic National Registry Exam | 100% | 73% | ** |
| Respiratory Care | AAS | Therapist Multiple-Choice Examination (TMC) | 100% | 100% | 100% |
| Certified Surgical Technologist (CST) | AAS/Diploma | National Certification (NBSTSA) | 100% | 100% | 100% |
| Central Processing Technician | TCC | Certification Board for Sterile Processing and Distribution - CSPDT | 86% | 67% | 76% |
| Veterinary Technology | AAS | Veterinary Technician National Exam | 100% | 100% | ** |
| Nursing Sciences Division | | | | | |
| Medical Assisting | Diploma | Certified Medical Assisting (AAMA Certification) | 100% | 83% | 100% |
| Patient Care Assisting | TCC | National Nurse Aide Assessment Program - State Nurse Aid Registry | 80% | 86% | ** |
| Registered Nursing (RN) | ADN | National Council Licensure Examination for Registered Nurses (NCLEX-RN) | 95% | 96% | ** |

Source: Data provided by Gwinnett Tech's program directors.

* There were no graduates this year.

** Results not posted as of January 2020

Continuing Education

Demographic Profile

Annual Enrollment and Program Offerings

Enrollment and Program Offerings by Term

Top 10 Programs by Enrollment

Top Industries Served Through Non-Credit Training

Continuing Education is designed for students who plan to attend Gwinnett Tech to take non-credit courses, seminars, and/or specialty courses and do not wish to earn a degree, diploma, or technical certificate of credit. Gwinnett Tech offers hundreds of seminars, workshops, and short courses designed to boost students' careers, enhance skills, and enrich lives. Courses are offered on Gwinnett Tech's campus or at various community locations, with a wide range of online options as well.

| Continuing Education Participant Demographic Profile AY2019 | | |
|-------------------------------------------------------------------|--------------|---------------|
| | Count | Percentage |
| Gender | | |
| Male | 941 | 34.7% |
| Female | 1,677 | 61.8% |
| Undeclared | 97 | 3.6% |
| Race/Ethnicity | | |
| American Indian | 2 | 0.1% |
| Asia or Pacific Islander | 298 | 11.0% |
| Black or African American | 307 | 11.3% |
| Hispanic | 587 | 21.6% |
| Caucasian | 441 | 16.2% |
| Non-resident alien | 4 | 0.1% |
| Undeclared | 1,076 | 39.6% |
| Educational Attainment | | |
| Did not graduate from high school | 8 | 0.3% |
| Less than high school diploma | 3 | 0.1% |
| GED | 40 | 1.5% |
| High School Graduate | 452 | 16.6% |
| High School, Some College | 105 | 3.9% |
| Some College | 125 | 4.6% |
| Associate Degree | 82 | 3.0% |
| College Grad/Bachelors | 507 | 18.7% |
| Master's Degree | 156 | 5.7% |
| Ph.D./Doctorate | 22 | 0.8% |
| Unknown | 1,215 | 44.7% |
| Age Group | | |
| Under 21 years | 63 | 2.3% |
| 21-25 years | 252 | 9.3% |
| 26-30 years | 286 | 10.5% |
| 31-35 years | 387 | 14.3% |
| 36-40 years | 289 | 10.6% |
| Over 40 years | 1,335 | 49.2% |
| Unknown | 103 | 3.8% |
| Total | 2,715 | 100.0% |

*Data provided by Gwinnett Tech's Office of Continuing Education

| Continuing Education Program Offerings and Enrollment by Term AY2017 – AY2019 | | | | | |
|-------------------------------------------------------------------------------------|--------|--------|----------|--------|----------|
| | AY2017 | AY2018 | % Change | AY2019 | % Change |
| Enrollment | 4,911 | 4,608 | -6.2% | 3,463 | -24.8% |
| Program Offerings | 1,097 | 668 | -39.1% | 1,098 | 64.4% |

*Data provided by Gwinnett Tech's Office of Continuing Education

**Continuing Education
Program Offerings and Enrollment by Term
AY2017 - AY2019**

| Term | Program Offerings | | | Enrollment | | |
|---------------|-------------------|------------|--------------|--------------|--------------|--------------|
| | Public | Contracted | Total | Public | Contracted | Total |
| Summer 2016 | 286 | 21 | 307 | 1,332 | 154 | 1,486 |
| Fall 2016 | 205 | 14 | 219 | 725 | 99 | 824 |
| Winter 2017 | 314 | 19 | 333 | 1,586 | 91 | 1,677 |
| Spring 2017 | 220 | 18 | 238 | 806 | 118 | 924 |
| AY2017 | 1,025 | 72 | 1,097 | 4,449 | 462 | 4,911 |
| Summer 2017 | 166 | 13 | 179 | 1,092 | 160 | 1,252 |
| Fall 2017 | 130 | 15 | 145 | 736 | 92 | 828 |
| Winter 2018 | 203 | 33 | 236 | 1,306 | 285 | 1,591 |
| Spring 2018 | 88 | 20 | 108 | 655 | 282 | 937 |
| AY2018 | 587 | 81 | 668 | 3,789 | 819 | 4,608 |
| Summer 2018 | 132 | 28 | 160 | 1020 | 403 | 1423 |
| Fall 2018 | 112 | 30 | 142 | 653 | 261 | 914 |
| Winter 2019 | 159 | 26 | 185 | 1140 | 211 | 1351 |
| Spring 2019 | 120 | 35 | 155 | 650 | 223 | 873 |
| AY2019 | 523 | 119 | 642 | 3,463 | 1,098 | 4,561 |

*Data provided by Gwinnett Tech's Office of Continuing Education

**Continuing Education
Top 10 Programs by Enrollment
AY2019**

- | | |
|------------------------------------|-----------------------------------------------------|
| • CPR for the Healthcare Provider | • Forklift Operator Certification |
| • English as a second Language | • Expanded Duties Certification |
| • Pediatric First Aid CPR AED | • Maximizing Your Resources BOC Information Session |
| • Excel Introduction | • Pharmacy Technician |
| • Successful Retirement Strategies | • Oxyfuel Cutting (WELD1010) |

*Data provided by Gwinnett Tech's Office of Continuing Education

**Continuing Education
Top Industries Served Through Non-Credit Training
AY2019**

- | | |
|-------------------------------------------|---------------------------------------------|
| • Healthcare | • Financial Services |
| • Professional Services | • Facility Management and Maintenance |
| • Warehousing, Distribution and Logistics | • Government and Municipal Support Services |
| • Manufacturing | |

*Data provided by Gwinnett Tech's Office of Continuing Education

TCSG Performance

Total Credit Enrollment, Credit Hours, and FTE
Retention Rates
Graduates and Awards Conferred
Graduation Rates
Placement Rates – Placed In Field and Total

Technical College System of Georgia
Total Credit Enrollment, Credit Hours, and FTE
AY2018 – AY2019

| Institution | Total Enrollment | | | Credit Hours | | | Full Time Equivalent (FTE) | | |
|---------------------------------|------------------|----------------|-------------|------------------|------------------|-------------|----------------------------|---------------|-------------|
| | AY2018 | AY2019 | % Change | AY2018 | AY2019 | % Change | AY2018 | AY2019 | % Change |
| Albany | 4,478 | 4,407 | -1.6% | 77,486 | 75,600 | -2.4% | 2,582 | 2,520 | -2.4% |
| Athens | 6,138 | 6,300 | 2.6% | 85,567 | 86,824 | 1.5% | 2,852 | 2,894 | 1.5% |
| Atlanta | 5,788 | 5,536 | -4.4% | 90,934 | 86,780 | -4.6% | 3,031 | 2,892 | -4.6% |
| Augusta | 6,361 | 6,085 | -4.3% | 101,408 | 98,341 | -3.0% | 3,380 | 3,278 | -3.0% |
| Central Georgia | 11,973 | 12,048 | 0.6% | 169,040 | 167,438 | -0.9% | 5,634 | 5,581 | -0.9% |
| Chattahoochee | 14,709 | 14,943 | 1.6% | 192,556 | 195,057 | 1.3% | 6,418 | 6,501 | 1.3% |
| Coastal Pines | 4,728 | 5,352 | 13.2% | 57,692 | 66,260 | 14.9% | 1,923 | 2,208 | 14.8% |
| Columbus | 4,607 | 4,769 | 3.5% | 68,445 | 71,818 | 4.9% | 2,281 | 2,393 | 4.9% |
| Georgia Northwestern | 7,499 | 7,730 | 3.1% | 110,421 | 113,697 | 3.0% | 3,680 | 3,789 | 3.0% |
| Georgia Piedmont | 5,799 | 4,829 | -16.7% | 86,132 | 69,869 | -18.9% | 2,871 | 2,328 | -18.9% |
| Gwinnett | 12,102 | 12,468 | 3.0% | 161,020 | 168,945 | 4.9% | 5,367 | 5,631 | 4.9% |
| Lanier | 5,130 | 5,846 | 14.0% | 72,221 | 81,139 | 12.3% | 2,407 | 2,704 | 12.3% |
| North Georgia | 3,660 | 3,606 | -1.5% | 54,610 | 54,778 | 0.3% | 1,820 | 1,825 | 0.3% |
| Oconee Fall Line | 2,121 | 2,262 | 6.6% | 29,842 | 31,058 | 4.1% | 994 | 1,035 | 4.1% |
| Ogeechee | 2,809 | 2,919 | 3.9% | 46,607 | 49,474 | 6.2% | 1,553 | 1,649 | 6.2% |
| Savannah | 5,752 | 5,774 | 0.4% | 87,528 | 85,728 | -2.1% | 2,917 | 2,857 | -2.1% |
| South Georgia | 2,837 | 3,083 | 8.7% | 47,857 | 52,028 | 8.7% | 1,595 | 1,734 | 8.7% |
| Southeastern | 2,364 | 2,571 | 8.8% | 34,151 | 35,643 | 4.4% | 1,138 | 1,188 | 4.4% |
| Southern Crescent | 6,657 | 7,139 | 7.2% | 100,368 | 102,380 | 2.0% | 3,345 | 3,412 | 2.0% |
| Southern Regional | 5,205 | 6,153 | 18.2% | 82,791 | 96,460 | 16.5% | 2,759 | 3,215 | 16.5% |
| West Georgia | 9,536 | 10,112 | 6.0% | 129,791 | 135,934 | 4.7% | 4,326 | 4,531 | 4.7% |
| Wiregrass Georgia | 5,904 | 6,908 | 17.0% | 77,247 | 84,455 | 9.3% | 2,574 | 2,815 | 9.4% |
| Tech College Total | 136,157 | 140,840 | 3.4% | 1,963,714 | 2,009,706 | 2.3% | 65,457 | 66,990 | 2.3% |
| Bainbridge | 1,051 | N/A | N/A | 16,230 | N/A | N/A | 541 | N/A | N/A |
| College Tech. Div. Total | 1,051 | N/A | N/A | 16,230 | N/A | N/A | 541 | N/A | N/A |
| System Total | 137,208 | N/A | N/A | 1,979,944 | N/A | N/A | 65,998 | N/A | N/A |

Source: KMS #ER21

**Technical College System of Georgia
Retention Rates*
AY2018 - AY2019**

| Institution | AY2018 | | | AY2019 | | |
|----------------------|---------------|--------------------|--------------|---------------|-----------------|--------------|
| | Fall Cohort** | Number Retained*** | Rate | Fall Cohort | Number Retained | Rate |
| Albany | 612 | 392 | 64.1% | 628 | 399 | 63.5% |
| Athens | 867 | 601 | 69.3% | 935 | 631 | 67.5% |
| Atlanta | 740 | 506 | 68.4% | 898 | 469 | 52.2% |
| Augusta | 894 | 596 | 66.7% | 976 | 604 | 61.9% |
| Central Georgia | 1,612 | 1,101 | 68.3% | 1,412 | 895 | 63.4% |
| Chattahoochee | 1,649 | 1,064 | 64.5% | 1,969 | 1,176 | 59.7% |
| Coastal Pines | 486 | 334 | 68.7% | 444 | 280 | 63.1% |
| Columbus | 585 | 357 | 61.0% | 550 | 346 | 62.9% |
| Georgia Northwestern | 752 | 541 | 71.9% | 665 | 469 | 70.5% |
| Georgia Piedmont | 58 | 46 | 79.3% | 59 | 38 | 64.4% |
| Gwinnett | 1,509 | 1,022 | 67.7% | 1,764 | 1,136 | 64.4% |
| Lanier | 785 | 561 | 71.5% | 820 | 541 | 66.0% |
| North Georgia | 506 | 339 | 67.0% | 517 | 351 | 67.9% |
| Oconee Fall Line | 308 | 208 | 67.5% | 332 | 221 | 66.6% |
| Ogeechee | 527 | 396 | 75.1% | 540 | 401 | 74.3% |
| Savannah | 875 | 593 | 67.8% | 999 | 654 | 65.5% |
| South Georgia | 503 | 356 | 70.8% | 475 | 349 | 73.5% |
| Southeastern | 336 | 238 | 70.8% | 287 | 184 | 64.1% |
| Southern Crescent | 737 | 506 | 68.7% | 802 | 525 | 65.5% |
| Southern Regional | 578 | 387 | 67.0% | 616 | 401 | 65.1% |
| West Georgia | 1,166 | 803 | 68.9% | 1,099 | 719 | 65.4% |
| Wiregrass Georgia | 677 | 473 | 69.9% | 682 | 435 | 63.8% |
| System Total | 16,762 | 11,420 | 68.1% | 17,469 | 11,224 | 64.3% |

Source: KMS #DC184

*Retention is the measure of students from an academic year's "fall cohort" who graduate or re-enroll in any credit program at any TCSG or USG college during their first Fall term, any subsequent term that year, or the following year.

**A Fall cohort is comprised of credit enrolled students that meet the following criteria:

- Regular admits only (no developmental, no provisional, no special admits)
- All major code levels, including those ending in zero (includes TCCs, Diplomas, Degrees, and also students not in an award program)
- All student types except no high school (code H) and no transient (code A)
- First-time at the College either Summer or Fall (exclusive of previous high-school enrollment)
- Can be full time or part time

***Students from the Cohort are counted as Retained, in exactly one category using the following priority:

- Graduated from the same college (or the administratively merged college, if applicable) in any program during any term from their first fall term to the summer term of the subsequent academic year
- Graduated from a different TCSG college in any program for any term from their first fall term to the summer term of the subsequent academic year
- Enrolled at this same college (or the administratively merged college, if applicable) in any program at least one term during the subsequent academic year
- Enrolled at a different TCSG college in any program at least one term during the subsequent academic year
- Enrolled at a USG (University System of Georgia) college in any program at least one term during the subsequent academic year, based on a National Student Clearinghouse data match

**Technical College System of Georgia
 Graduates and Awards Conferred
 AY2018 - AY2019**

| Institution | Graduates | | | Awards Conferred | | |
|---------------------------------|---------------|---------------|--------------|------------------|---------------|-------------|
| | AY2018 | AY2019 | % Change | AY2018 | AY2019 | % Change |
| Albany | 1,427 | 1,332 | -6.7% | 2,420 | 2,143 | -11.4% |
| Athens | 1,493 | 1,440 | -3.5% | 2,306 | 2,334 | 1.2% |
| Atlanta | 1,545 | 1,871 | 21.1% | 2,347 | 2,722 | 16.0% |
| Augusta | 1,427 | 1,475 | 3.4% | 2,308 | 2,361 | 2.3% |
| Central Georgia | 3,690 | 4,194 | 13.7% | 6,084 | 6,850 | 12.6% |
| Chattahoochee | 2,197 | 3,963 | 80.4% | 4,197 | 6,413 | 52.8% |
| Coastal Pines | 1,184 | 1,582 | 33.6% | 1,855 | 2,168 | 16.9% |
| Columbus | 970 | 977 | 0.7% | 1,662 | 1,725 | 3.8% |
| Georgia Northwestern | 2,107 | 1,735 | -17.7% | 4,243 | 3,966 | -6.5% |
| Georgia Piedmont | 1,320 | 1,010 | -23.5% | 2,180 | 1,569 | -28.0% |
| Gwinnett | 2,098 | 2,180 | 3.9% | 3,656 | 4,008 | 9.6% |
| Lanier | 1,416 | 1,445 | 2.0% | 2,353 | 2,414 | 2.6% |
| North Georgia | 721 | 730 | 1.2% | 1,100 | 1,417 | 28.8% |
| Oconee Fall Line | 667 | 822 | 23.2% | 986 | 1,298 | 31.6% |
| Ogeechee | 1,013 | 1,059 | 4.5% | 1,693 | 1,779 | 5.1% |
| Savannah | 1,738 | 1,752 | 0.8% | 3,211 | 2,990 | -6.9% |
| South Georgia | 1,149 | 1,153 | 0.3% | 2,060 | 2,082 | 1.1% |
| Southeastern | 707 | 603 | -14.7% | 1,019 | 876 | -14.0% |
| Southern Crescent | 2,039 | 2,622 | 28.6% | 3,701 | 4,245 | 14.7% |
| Southern Regional | 1,266 | 1,541 | 21.7% | 1,846 | 2,281 | 23.6% |
| West Georgia | 2,103 | 2,126 | 1.1% | 3,033 | 3,004 | -1.0% |
| Wiregrass Georgia | 1,627 | 1,679 | 3.2% | 2,660 | 2,535 | -4.7% |
| Tech College Total | 33,904 | 37,291 | 10.0% | 56,920 | 61,180 | 7.5% |
| Bainbridge | 185 | N/A | N/A | 198 | N/A | N/A |
| College Tech. Div. Total | 185 | N/A | N/A | 198 | N/A | N/A |
| System Total | 34,089 | N/A | N/A | 57,118 | N/A | N/A |

Source: KMS #TES2023

**Technical College System of Georgia
Graduation Rates*
AY2018 - AY2019**

| Institution | AY2018 | | | AY2019 | | |
|----------------------|---------------|---------------------|--------------|---------------|------------------|--------------|
| | Graduates** | Non-Grad Leavers*** | Rate | Graduates | Non-Grad Leavers | Rate |
| Albany | 2,495 | 3,646 | 68.4% | 2,384 | 1,024 | 70.0% |
| Athens | 2,560 | 3,383 | 75.7% | 2,619 | 840 | 75.7% |
| Atlanta | 2,964 | 4,354 | 68.1% | 2,982 | 1,418 | 67.8% |
| Augusta | 2,492 | 3,381 | 73.7% | 2,549 | 1,032 | 71.2% |
| Bainbridge | N/A | N/A | N/A | 185 | 256 | 42.0% |
| Central Georgia | 6,455 | 8,196 | 78.8% | 7,115 | 1,696 | 80.8% |
| Chattahoochee | 3,939 | 5,394 | 73.0% | 5,461 | 1,402 | 79.6% |
| Coastal Pines | 2,269 | 2,644 | 85.8% | 2,526 | 393 | 86.5% |
| Columbus | 1,683 | 2,582 | 65.2% | 1,761 | 878 | 66.7% |
| Georgia Northwestern | 3,805 | 4,705 | 80.9% | 3,262 | 888 | 78.6% |
| Georgia Piedmont | 2,467 | 3,376 | 73.1% | 2,059 | 884 | 70.0% |
| Gwinnett | 3,616 | 4,998 | 72.3% | 3,643 | 1,513 | 70.7% |
| Lanier | 2,545 | 3,200 | 79.5% | 2,552 | 623 | 80.4% |
| North Georgia | 1,386 | 2,223 | 62.3% | 1,424 | 699 | 67.1% |
| Oconee Fall Line | 1,223 | 1,552 | 78.8% | 1,352 | 316 | 81.1% |
| Ogeechee | 1,852 | 2,335 | 79.3% | 1,847 | 496 | 78.8% |
| Savannah | 3,133 | 4,210 | 74.4% | 3,090 | 1,162 | 72.7% |
| South Georgia | 1,956 | 2,416 | 81.0% | 1,978 | 465 | 81.0% |
| Southeastern | 1,303 | 1,613 | 80.8% | 1,199 | 295 | 80.3% |
| Southern Crescent | 3,301 | 4,426 | 74.6% | 4,123 | 1,033 | 80.0% |
| Southern Regional | 2,403 | 3,296 | 72.9% | 2,557 | 982 | 72.3% |
| West Georgia | 4,058 | 5,563 | 72.9% | 3,774 | 1,519 | 71.3% |
| Wiregrass Georgia | 2,891 | 3,695 | 78.2% | 3,103 | 908 | 77.4% |
| System Total | 60,796 | 81,188 | 74.9% | 63,545 | 20,722 | 75.4% |

Source: KMS #TES311

*Graduation Rate (%) = $\frac{\text{Graduates}}{\text{Graduates} + \text{Non-Graduate Leavers}}$

**Each student is reported as a graduate exactly once at the college level, once for each campus (If a student received an award at more than once campus, he or she is counted once for each of those campuses.), and once for each major (students are counted once for each award they received). Therefore, a sum of graduates by campus, or a count of graduates from the student details, will be more than the college's unduplicated total.

***Non-Graduate Leaver: during the two year period took 12 or more hours and did not graduate. Moreover, during the last term enrolled during the two-year period, the student was not a special admit, not transient, and their primary major was in a program major (not DV00, IA00, SP00 or TR00). The student had enrolled in at least one vocational course that was not subject 'SCT' and not 'COMP', and the student was not enrolled at that college both Spring Semester and Summer Semester of the second year. Students are reported as a leaver exactly once, based on their home campus and major the last term enrolled during the two-year period.

Technical College System of Georgia
Placement Rates* - In-Field and Total*****
AY2018 - AY2019

| Institution | Graduates (Unduplicated) | | Placed in Field | | Total Placement | |
|-------------------------------|-----------------------------|---------------|-----------------|--------------|-----------------|--------------|
| | AY2018 | AY2019 | AY2018 | AY2019 | AY2018 | AY2019 |
| Albany | 1,427 | 1,332 | 92.1% | 90.6% | 98.3% | 97.0% |
| Athens | 1,493 | 1,440 | 12.1% | 29.0% | 97.8% | 85.3% |
| Atlanta | 1,545 | 1,871 | 31.3% | 40.2% | 99.4% | 99.6% |
| Augusta | 1,427 | 1,475 | 12.5% | 14.8% | 100.0% | 99.2% |
| Central Georgia | 3,690 | 4,194 | 39.2% | 34.5% | 91.0% | 98.0% |
| Chattahoochee | 2,197 | 3,963 | 63.5% | 27.1% | 91.9% | 99.7% |
| Coastal Pines | 1,184 | 1,582 | 6.5% | 6.8% | 100.0% | 100.0% |
| Columbus | 970 | 977 | 14.0% | 18.6% | 98.4% | 99.0% |
| Georgia Northwestern | 2,107 | 1,735 | 15.6% | 19.9% | 99.6% | 99.6% |
| Georgia Piedmont | 1,320 | 1,010 | 50.3% | 38.3% | 100.0% | 100.0% |
| Gwinnett | 2,098 | 2,180 | 63.7% | 27.7% | 99.8% | 95.4% |
| Lanier | 1,416 | 1,445 | 32.0% | 12.4% | 100.0% | 100.0% |
| North Georgia | 721 | 730 | 1.4% | 1.1% | 100.0% | 100.0% |
| Oconee Fall Line | 667 | 822 | 51.1% | 23.1% | 99.2% | 100.0% |
| Ogeechee | 1,013 | 1,059 | 48.1% | 57.3% | 82.1% | 82.2% |
| Savannah | 1,738 | 1,752 | 6.6% | 25.6% | 100.0% | 99.8% |
| South Georgia | 1,149 | 1,153 | 6.0% | 26.5% | 100.0% | 99.7% |
| Southeastern | 707 | 603 | 33.8% | 55.3% | 94.9% | 98.8% |
| Southern Crescent | 2,039 | 2,622 | 26.9% | 37.5% | 88.4% | 95.7% |
| Southern Regional | 1,266 | 1,541 | 11.0% | 20.3% | 100.0% | 100.0% |
| West Georgia | 2,103 | 2,126 | 12.9% | 14.8% | 98.5% | 98.5% |
| Wiregrass Georgia | 1,627 | 1,679 | 21.7% | 46.1% | 78.2% | 91.6% |
| Tech College Total | 33,904 | 37,291 | 28.8% | 28.1% | 94.4% | 96.3% |
| Bainbridge | 185 | 0 | 0.0% | 0.0% | 100.0% | 0.0% |
| College Tech Div Total | 185 | 0 | 0.0% | 0.0% | 100.0% | 0.0% |
| System Total | 34,089 | 37,291 | 28.7% | 28.1% | 94.4% | 96.3% |

Source: KMS #DC265

*Reporting year's rates are based on previous year's graduates.

**Total Placement = $\frac{\text{In Field} + \text{Military} + \text{Related Field} + \text{Unrelated Field} + \text{In Field \& Continuing Education} + \text{Related Field \& Cont. Ed.} + \text{Unrelated Field \& Cont. Ed.} + \text{Continuing Ed.}}{\text{Total Grads - (Unrelated Field \& Cont. Ed + Cont. Ed + Unavailable for Employment)}}$

***Placed In Field = $\frac{\text{Employed In Field} + \text{Related Field} + \text{Military} + \text{In Field \& Cont. Ed.} + \text{Related Field \& Cont. Ed.}}{\text{Total Grads - (Unrelated Field \& Cont. Ed + Cont. Ed + Unavailable for Employment)}}$

